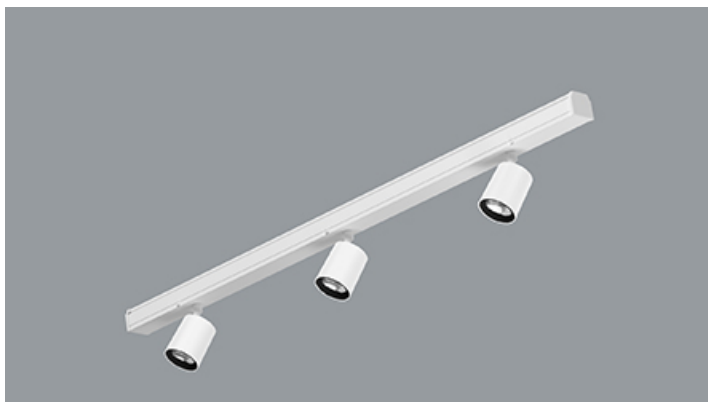
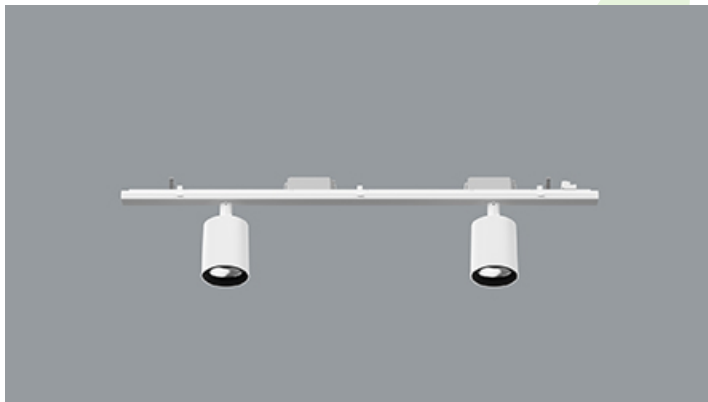
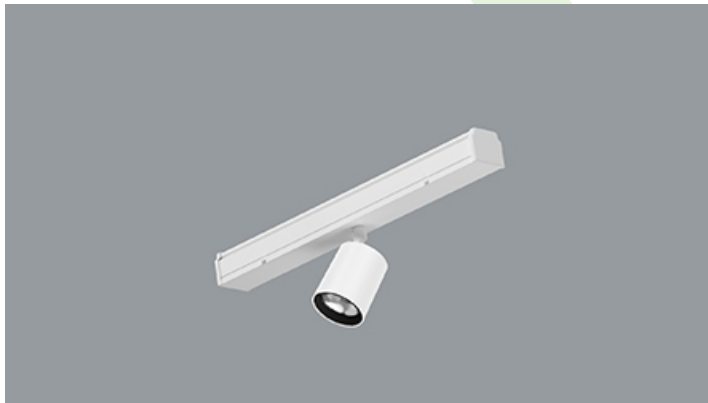




GRANVIA SPOTS

Projectors



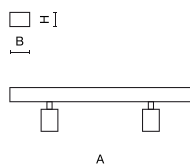
GRANVIA SPOTS is a high-performance accent lighting module for the GRANVIA trunking system, designed for precise illumination in supermarkets and commercial spaces. Available in three lengths with up to three Luxcan Pro projectors, it offers flexibility with different beam angles and specialized LED light sources like MEAT, BREAD, FRUIT and PEARL WHITE and high CRI options to ensure vivid, true-to-life colours and enhanced product display.



Main parameters:

Name	Luminous flux LED [lm]	Power of luminaire [W]	Color [K]	Dimensions A x B x H [mm]
GRANVIA SPOTS 1x 2000 15°	1659 / 1706 / 1732 / 1585,5 / 1354 / 1774,5	13,9 / 12,8	3000 / 4000 / BREAD / FRUIT / MEAT / PEARL WHITE	600 x 72 x 50
GRANVIA SPOTS 1x 2000 24°	1659 / 1706 / 1732 / 1585,5 / 1354 / 1774,5	13,9	3000 / 4000 / BREAD / FRUIT / MEAT / PEARL WHITE	600 x 72 x 50
GRANVIA SPOTS 1x 2000 40°	1659 / 1706 / 1732 / 1585,5 / 1354 / 1774,5	13,9	3000 / 4000 / BREAD / FRUIT / MEAT / PEARL WHITE	600 x 72 x 50
GRANVIA SPOTS 1x 2000 60°	1659 / 1706 / 1732 / 1585,5 / 1354 / 1774,5	13,9	3000 / 4000 / BREAD / FRUIT / MEAT / PEARL WHITE	600 x 72 x 50
GRANVIA SPOTS 1x 3000 15°	2504,3 / 2577,8 / 2399 / 2194,5 / 1874,3 / 2451	19,1 / 18,6	3000 / 4000 / BREAD / FRUIT / MEAT / PEARL WHITE	600 x 72 x 50
GRANVIA SPOTS 1x 3000 24°	2504,3 / 2577,8 / 2399 / 2194,5 / 1874,3 / 2451	19	3000 / 4000 / BREAD / FRUIT / MEAT / PEARL WHITE	600 x 72 x 50
GRANVIA SPOTS 1x 3000 40°	2504,3 / 2577,8 / 2399 / 2194,5 / 1874,3 / 2451	19	3000 / 4000 / BREAD / FRUIT / MEAT / PEARL WHITE	600 x 72 x 50
GRANVIA SPOTS 1x 3000 60°	2504,3 / 2577,8 / 2399 / 2194,5 / 1874,3 / 2451	19	3000 / 4000 / BREAD / FRUIT / MEAT / PEARL WHITE	600 x 72 x 50
GRANVIA SPOTS 2x 2000 15°	3318 / 3412 / 3464 / 3171 / 2708 / 3549	26,8 / 24,8	3000 / 4000 / BREAD / FRUIT / MEAT / PEARL WHITE	900 x 72 x 50
GRANVIA SPOTS 2x 2000 24°	3318 / 3412 / 3464 / 3171 / 2708 / 3549	26,8 / 24,8	3000 / 4000 / BREAD / FRUIT / MEAT / PEARL WHITE	900 x 72 x 50
GRANVIA SPOTS 2x 2000 40°	3318 / 3412 / 3464 / 3171 / 2708 / 3549	26,8 / 24,8	3000 / 4000 / BREAD / FRUIT / MEAT / PEARL WHITE	900 x 72 x 50
GRANVIA SPOTS 2x 2000 60°	3318 / 3412 / 3464 / 3171 / 2708 / 3549	26,8 / 24,8	3000 / 4000 / BREAD / FRUIT / MEAT / PEARL WHITE	900 x 72 x 50
GRANVIA SPOTS 2x 3000 15°	5008,5 / 5155,5 / 4798 / 4389 / 3748,5 / 4902	36,8 / 36	3000 / 4000 / BREAD / FRUIT / MEAT / PEARL WHITE	900 x 72 x 50
GRANVIA SPOTS 2x 3000 24°	5008,5 / 5155,5 / 4798 / 4389 / 3748,5 / 4902	36,8 / 36	3000 / 4000 / BREAD / FRUIT / MEAT / PEARL WHITE	900 x 72 x 50
GRANVIA SPOTS 2x 3000 40°	5008,5 / 5155,5 / 4798 / 4389 / 3748,5 / 4902	36,8 / 36	3000 / 4000 / BREAD / FRUIT / MEAT / PEARL WHITE	900 x 72 x 50
GRANVIA SPOTS 2x 3000 60°	5008,5 / 5155,5 / 4798 / 4389 / 3748,5 / 4902	36,8 / 36	3000 / 4000 / BREAD / FRUIT / MEAT / PEARL WHITE	900 x 72 x 50
GRANVIA SPOTS 3x 2000 15°	4977 / 5118 / 5196 / 4756,5 / 4062 / 5323,5	40,2 / 37,2	3000 / 4000 / BREAD / FRUIT / MEAT / PEARL WHITE	1500 x 72 x 50
GRANVIA SPOTS 3x 2000 24°	4977 / 5118 / 5196 / 4756,5 / 4062 / 5323,5	40,2 / 37,2	3000 / 4000 / BREAD / FRUIT / MEAT / PEARL WHITE	1500 x 72 x 50
GRANVIA SPOTS 3x 2000 40°	4977 / 5118 / 5196 / 4756,5 / 4062 / 5323,5	40,2 / 37,2	3000 / 4000 / BREAD / FRUIT / MEAT / PEARL WHITE	1500 x 72 x 50
GRANVIA SPOTS 3x 2000 60°	4977 / 5118 / 5196 / 4756,5 / 4062 / 5323,5	40,2 / 37,2	3000 / 4000 / BREAD / FRUIT / MEAT / PEARL WHITE	1500 x 72 x 50
GRANVIA SPOTS 3x 3000 15°	7512,8 / 7733,3 / 7197 / 6583,5 / 5622,8 / 7353	55,2 / 54	3000 / 4000 / BREAD / FRUIT / MEAT / PEARL WHITE	1500 x 72 x 50
GRANVIA SPOTS 3x 3000 24°	7512,8 / 7733,3 / 7197 / 6583,5 / 5622,8 / 7353	55,2 / 54	3000 / 4000 / BREAD / FRUIT / MEAT / PEARL WHITE	1500 x 72 x 50
GRANVIA SPOTS 3x 3000 40°	7512,8 / 7733,3 / 7197 / 6583,5 / 5622,8 / 7353	55,2 / 54	3000 / 4000 / BREAD / FRUIT / MEAT / PEARL WHITE	1500 x 72 x 50
GRANVIA SPOTS 3x 3000 60°	7512,8 / 7733,3 / 7197 / 6583,5 / 5622,8 / 7353	55,2 / 54	3000 / 4000 / BREAD / FRUIT / MEAT / PEARL WHITE	1500 x 72 x 50

Technical drawing:



Light and electrical features:

Light source	LED
Voltage	220..240 V, 50..60 Hz
Lifetime of LED sources [h]	100000
Lx/By	L80/B10
CRI	>90/>85/>95
SDCM (LED sources)	3
Photobiological risk class (IEC/EN 62471)	RG0
Operating temperature range [°C]	5 ÷ 35
Driver	standard on/off (E) DIM DALI (EDD) *
Power factor cos φ	>0,95

* Variant to specify when ordering

Mechanical features:

Assembly	directly mounted to ceiling construction or surface mounted on slings
Material	steel sheet and aluminum
Color	RAL 9016 (white)
Diffuser	transparent PMMA



Note: The power shown refers to the whole system (tolerance +/- 10%).
The given luminous flux refers to LED light sources (tolerance +/- 10% depends on the value of the colour temperature).
Technical data may be changed. Photos of the luminaires may differ from reality.
Date of last update: 27-03-2026