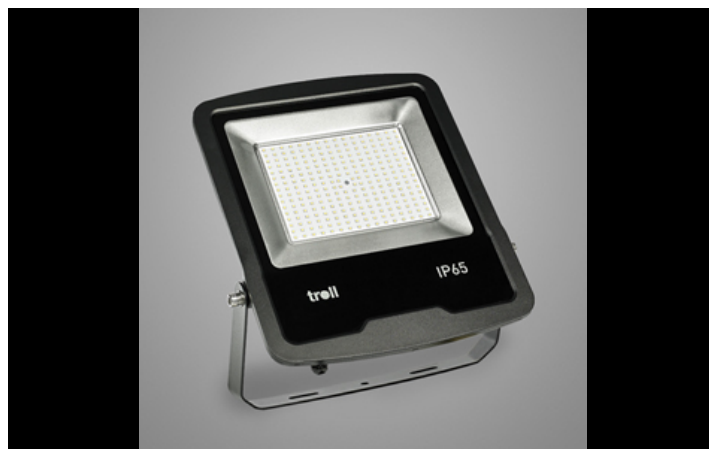




## FARGO

### Industrial luminaires



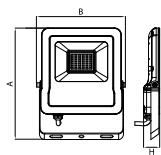
LED outdoor projector from the family Fargo. Luminaire to be used as lighting outdoor parking's, warehouses, Building façades and all outdoor applications requiring light projection. Projector designed for wall surface mounted. Luminaire body built in die-cast aluminium with protective glass and finish in black. Luminaire has a degree of isolation vs. environment of IP65. Luminaire allows tilting of 90°. Luminaire adds in an PMMA lens system for each led with a protective transparent tempered glass and a beam angle of 120°.



Main parameters:

Name	Luminous flux LED [lm]	Power of luminaire [W]	Color [K]	Dimensions A x B x H [mm]
FARGO 1300 120°	1426,8	9,6	4000	152 x 113 x 28
FARGO 4000 120°	4978,2	29,3	4000	209 x 154 x 30
FARGO 7000 120°	6825	46,8	4000	237 x 188 x 36
FARGO 13000 120°	15401,2	98,3	4000	320 x 261 x 38
FARGO 20000 120°	21988,2	146,8	4000	420 x 294 x 51
FARGO 26000 120°	29146,8	199,8	4000	470 x 385 x 51

Technical drawing:



Light and electrical features:

Light source	LED
Voltage	220..240 V, 50..60 Hz
Lifetime of LED sources [h]	100000 (1) / 64000 (2)
Lx/By	L70/B10 (1) / L80/B10 (2)
CRI	>80
SDCM (LED sources)	3
Photobiological risk class (IEC/EN 62471)	RG0
Operating temperature range [°C]	-20 ÷ 45
Driver	standard on/off (E)
Power factor cos φ	0,95

Mechanical features:

Assembly	mounted on wall
Material	aluminum
Color	RAL 9005 (black)
Diffuser	hardened transparent glass

Note: The power shown refers to the whole system (tolerance +/- 10%).  
The given luminous flux refers to LED light sources (tolerance +/- 10% depends on the value of the colour temperature).  
Technical data may be changed. Photos of the luminaires may differ from reality.  
Date of last update: 13-01-2026