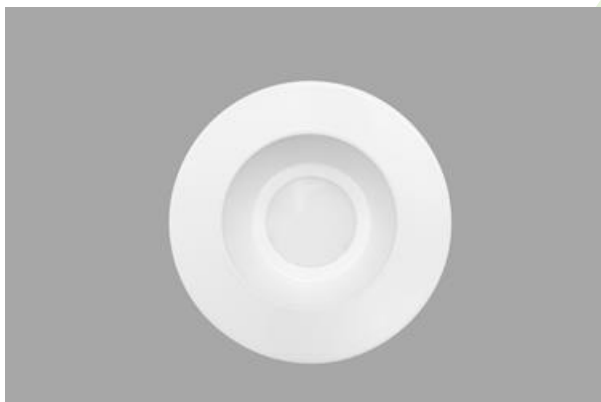


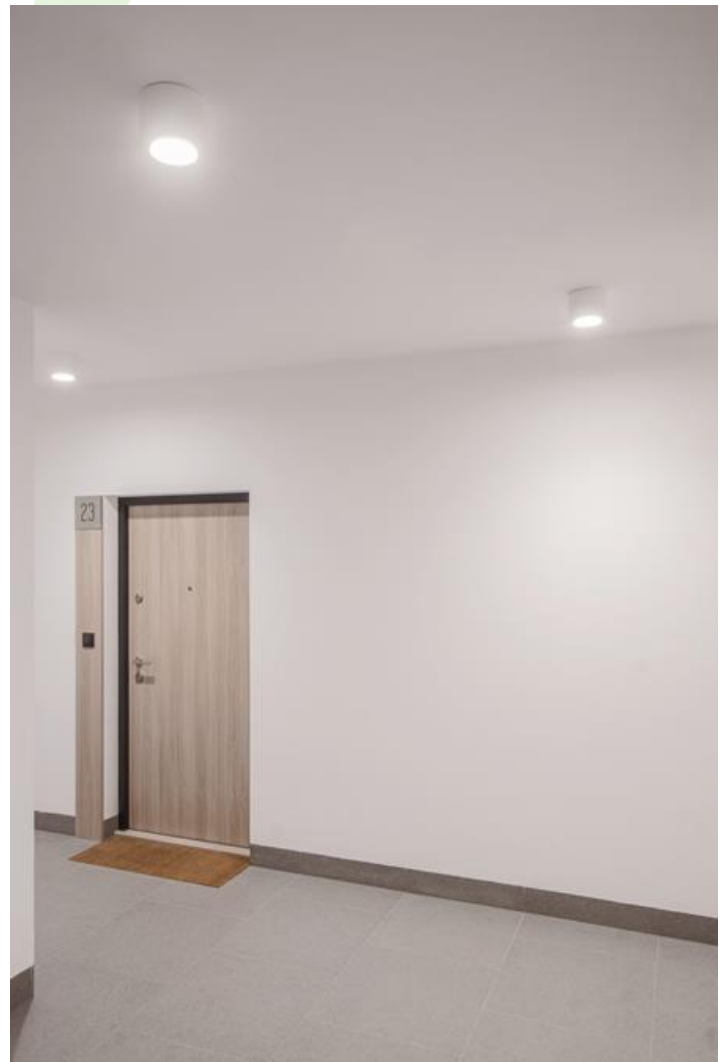


BERYL SURFACE NEW LED O IP44

Surface mounted luminaires



Downlight surface mounted luminaire made of cast aluminum. Luminaire is dedicated for prestigious interiors such as hotels, banks and offices of higher standard. Owing to the newest components and renowned producers of LEDs applied it was possible to build such luminaires which save energy consumption comparing with traditional solutions.



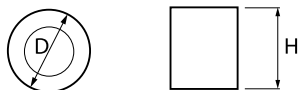
"Metamorfoza Ursus" residential, Warsaw



Main parameters:

Name	Luminous flux LED [lm]	Power of luminaire [W]	Color [K]	Dimensions D x H [mm]
BERYL SURFACE NEW LED O-1 1000	1292 / 1328	9,8	3000 / 4000	Ø149 x 151
BERYL SURFACE NEW LED O-1 1800	2058 / 2000	12,8	4000 / 3000	Ø149 x 151
BERYL SURFACE NEW LED O-2 2800	3108	18,4	4000	Ø185 x 175
BERYL SURFACE NEW LED O-2 3600	4179 / 4305	25,5	3000 / 4000	Ø185 x 175
BERYL SURFACE NEW LED O-3 2800	3019 / 3108	18,4	3000 / 4000	Ø215 x 182
BERYL SURFACE NEW LED O-3 3600	4179 / 4305	25,5	3000 / 4000	Ø215 x 182
BERYL SURFACE NEW LED O-3 5400	6494 / 6305	39,3	4000 / 3000	Ø215 x 182

Technical drawing:



Light and electrical features:

Light source	LED
Voltage	220..240 V, 50..60 Hz
Lifetime of LED sources [h]	88000 (1) / 100000 (2) / 100000 (3)/83000 (1) / 100000 (2) / 100000 (3)/91000 (1) / 100000 (2) / 100000 (3)/86000 (1) / 100000 (2) / 100000 (3)
Lx/By	L90/B10 (1) / L80/B10 (2) / L70/B10 (3)
CRI	85/80
SDCM (LED sources)	2
Photobiological risk class (IEC/EN 62471)	RG0
Operating temperature range [°C]	5 ÷ 30
Driver	standard on/off (E) DIM DALI (EDD) *
Power factor cos φ	>0,95

* Variant to specify when ordering

Mechanical features:

Assembly	surface mounted on ceiling
Material	aluminum
Color	RAL 9016 (white)
Diffuser	transparent PMMA Micro-PRM (micro-prismatic diffuser PMMA) PLX (PMMA opal) transparent glass SHM (hardened mat glass)

Additional information:

The luminaire can be made in CLO version.

Note: The power shown refers to the whole system (tolerance +/- 10%).
The given luminous flux refers to LED light sources (tolerance +/- 10% depends on the value of the colour temperature).
Technical data may be changed. Photos of the luminaires may differ from reality.
Date of last update: 13-12-2024