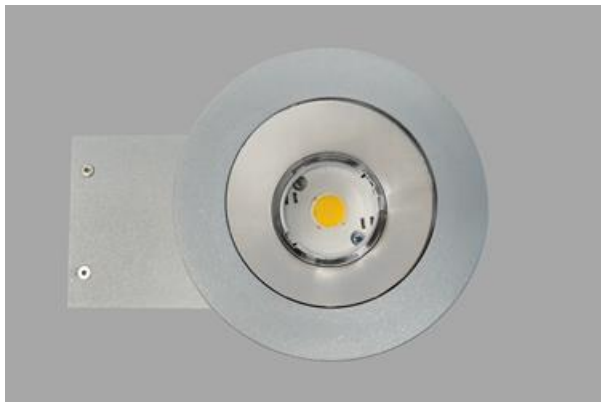
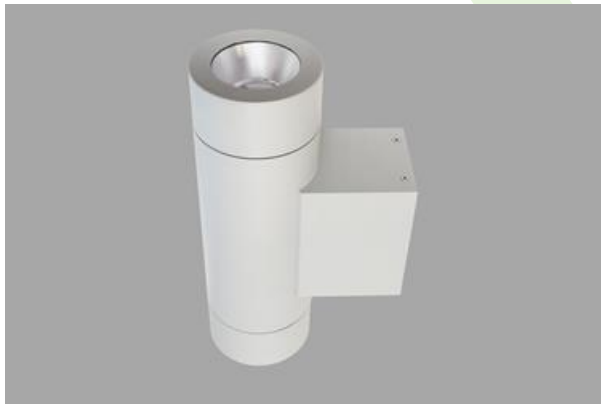


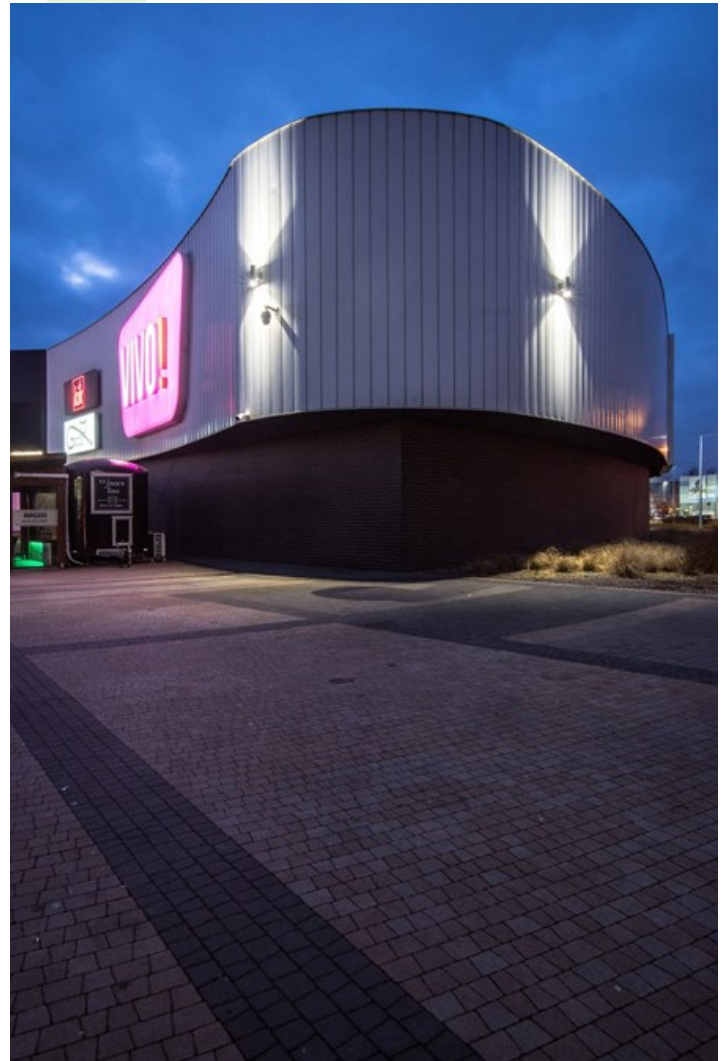


BERYL PROOF WALL LED

Outdoor luminaires



Luminaire adapted to be mounted on walls. High lighting efficiency LEDs were used. Its body is made from anodized aluminum profile. It is resistant to solids, dust, and liquids penetration – IP65. This type of luminaire is recommended for decorative or accent illumination of buildings.



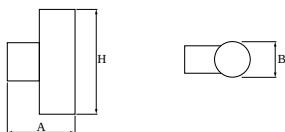
VIVO! Shopping Mall, Piła



Main parameters:

Name	Luminous flux LED [lm]	Power of luminaire [W]	Color [K]	Dimensions A x B x H [mm]
BERYL PROOF WALL LED UP&DOWN 2X1000	2300 / 2362	12,2	3000 / 4000	210 x 120 x 370
BERYL PROOF WALL LED UP&DOWN 2X2000	4400 / 4536	25,2	3000 / 4000	210 x 120 x 370
BERYL PROOF WALL LED UP OR DOWN 1000	1307 / 1344	8,9	3000 / 4000	210 x 120 x 370
BERYL PROOF WALL LED UP OR DOWN 2000	2200 / 2268	12,5	3000 / 4000	210 x 120 x 370

Technical drawing:



Light and electrical features:

Light source	LED
Voltage	220..240 V, 50..60 Hz
Lifetime of LED sources [h]	95000 (1) / 100000 (2) / 100000 (3)/88000 (1) / 100000 (2) / 100000 (3)
Lx/By	L90/B10 (1) / L80/B10 (2) / L70/B10 (3)
CRI	85
SDCM (LED sources)	2
Photobiological risk class (IEC/EN 62471)	RG1
Operating temperature range [°C]	-25 ÷ 30
Driver	standard on/off (E)
Power factor cos φ	>0,95

* Variant to specify when ordering

Mechanical features:

Assembly	mounted on wall
Material	aluminum
Color	RAL 9005 (black) RAL 9006 (gray, metallic, fine structure) RAL 7016 (anthracite, metallic, fine structure) *
Diffuser	transparent polycarbonate

Note: The power shown refers to the whole system (tolerance +/- 10%).
The given luminous flux refers to LED light sources (tolerance +/- 10% depends on the value of the colour temperature).
Technical data may be changed. Photos of the luminaires may differ from reality.
Date of last update: 22-10-2024