



## ATENA LINE NEW LED INDUSTRY

### Industrial luminaires



Industrial luminaire dedicated for ceiling mounting or for hanging mounting. Rectangular housing made of aluminum sheet. Only one colour available: RAL 9005 (black). Upon client request there is a possibility to make longer luminaire than standard dimensions. Consequently, the luminaire will have bigger luminous flux. The light sources are protected by diffuser made of hardened glass and the whole construction is characterized by high level of protection against dust and water penetration-IP65. Available accessories: electrical connectors of IP65 and clip for the hanging version. The product is recommended for production halls, warehouses and heavy industry. Permissible ambient temperature: -25° C - +50° C.

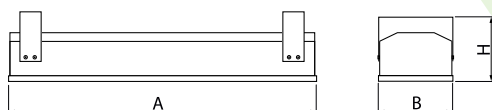




## Main parameters:

| Name                              | Luminous flux LED [lm] | Power of luminaire [W] | Color [K] | Dimensions A x B x H [mm] |
|-----------------------------------|------------------------|------------------------|-----------|---------------------------|
| ATENA LINE NEW LED INDUSTRY 18000 | 17151                  | 110                    | 5000      | 465 x 201 x 150           |
| ATENA LINE NEW LED INDUSTRY 24000 | 22297                  | 146                    | 5000      | 680 x 201 x 150           |
| ATENA LINE NEW LED INDUSTRY 30000 | 28814                  | 195                    | 5000      | 785 x 201 x 150           |
| ATENA LINE NEW LED INDUSTRY 36000 | 34303                  | 233                    | 5000      | 885 x 201 x 150           |

## Technical drawing:



## Light and electrical features:

|                                  |                       |
|----------------------------------|-----------------------|
| Light source                     | LED                   |
| Voltage                          | 220..240 V, 50..60 Hz |
| Lifetime of LED sources [h]      | 83000                 |
| Lx/By                            | L90/B10               |
| CRI                              | >80                   |
| SDCM (LED sources)               | 3                     |
| Operating temperature range [°C] | -25 ÷ 50              |
| Driver                           | standard on/off (E)   |
| Power factor cos φ               | >0,95                 |

## Mechanical features:

|          |   |
|----------|---|
| Assembly | directly mounted to ceiling construction or surface mounted on slings |
| Material | aluminum  |
| Color    | RAL 9005 (black)  |
| Diffuser | SH (transparent hardened glass)                                       |

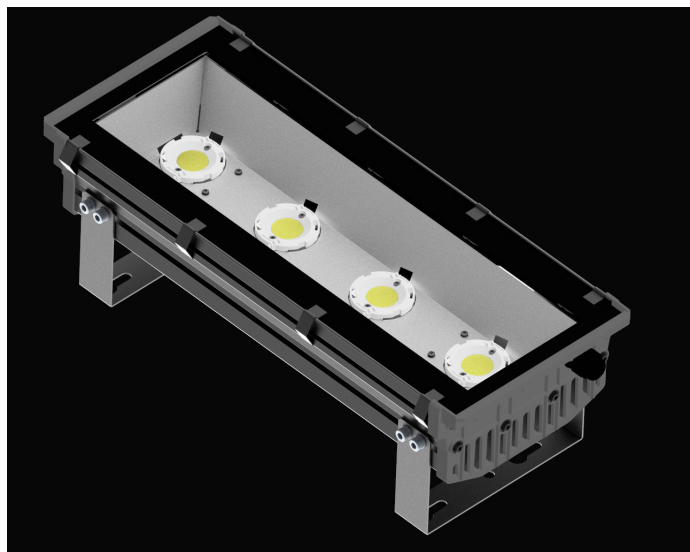
## Additional information:

Luminaire design variants - see the following page. In the standard version, the luminaire is made with a 1 meter long cable. Optional IP65 connectors are available. It is possible to make IK10 version with PC-T polycarbonate diffuser.

Note: The power shown refers to the whole system (tolerance +/- 10%).  
The given luminous flux refers to LED light sources (tolerance +/- 10% depends on the value of the colour temperature).  
Technical data may be changed. Photos of the luminaires may differ from reality.  
Date of last update: 24-04-2024

Dodatkowe informacje / Additional information / Zusätzliche Informationen:

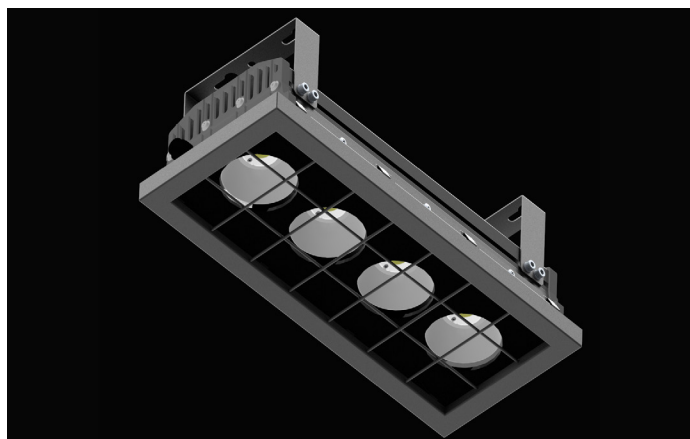
Wersje / Versions / Versions:



WIDE ODB - wersja z odbłyśnikiem pojedynczym blaszanym  
WIDE ODB - version with single tin reflector  
WIDE ODB - eine Ausführung mit einem Einzelreflektor aus Blech



WIDE / MEDIUM / NARROW - wersja z odbłyśnikami okrągłymi osobnymi dla każdego źródła LED  
WIDE / MEDIUM / NARROW - version with round reflectors separate for each LED light source  
WIDE / MEDIUM / NARROW - eine Ausführung mit separaten runden Reflektoren für alle LED-Leuchtmittel

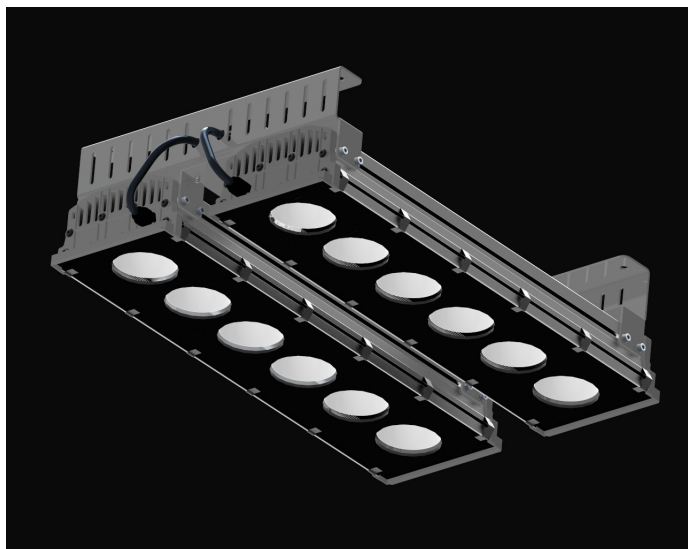


KR - oprawa z kratą ochronną  
KR - luminaire with a protective grid  
KR - Leuchte mit Schutzgitter



UCHWYT OBROTOWY - oprawa z uchwytem obrotowym  
UCHWYT OBROTOWY - luminaire with rotary handle  
UCHWYT OBROTOWY - Leuchte mit Drehgriff

Dodatkowe informacje / Additional information / Zusätzliche Informationen:



Możliwość łączenia dwóch opraw w jeden segment - uchwyt nastropowy:  
Possibility of connection two fittings in one segment - a ceiling holder:  
Optional können zwei Leuchten in einem Segment miteinander kombiniert werden - Deckenhalterung:



Możliwość łączenia dwóch opraw w jeden segment - uchwyt obrotowy:  
Possibility of connection two fittings in one segment - a rotary holder:  
Optional können zwei Leuchten in einem Segment miteinander kombiniert werden - Drehhalterung:



Możliwość montażu 1-punktowego na sztywnym pręcie (pręt po stronie klienta):  
Possibility of 1-point assembly on a rigid rod (rod should be provided by client):  
Montage an einer steifen Stange möglich (1-Punkt-Montage) (die Stange wird durch den Kunden beigestellt):