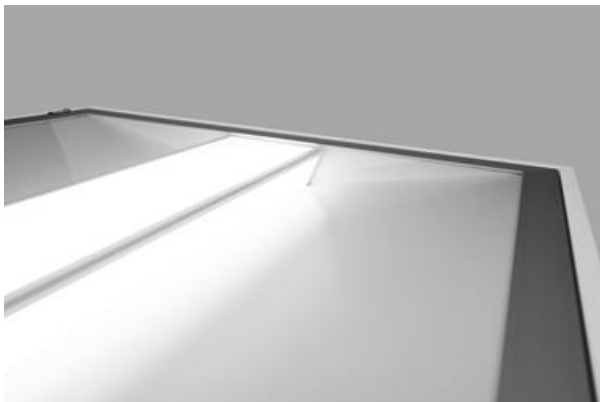
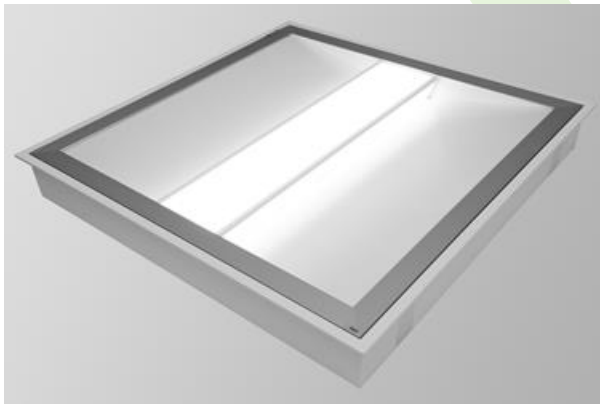




AGAT CLEAN POS LED

Clean luminaires - recessed



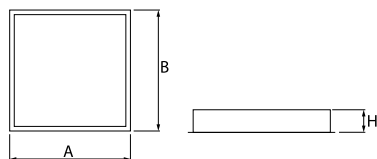
LED luminaire designed to module and gypsum and cardboard suspended ceilings. Luminaire body made from steel sheet, powder coated in white. Hardened glass in aluminum frame. Optical system consists of white reflectors. Luminaire design prevents from dazzle effect. Luminaire recommended for: wards and consulting rooms.



Main parameters:

Name	Luminous flux LED [lm]	Power of luminaire [W]	Color [K]	Dimensions A x B x H [mm]
AGAT CLEAN POS LED 3900	3926	21,7	4000	596 x 596 x 99
AGAT CLEAN POS LED 6600	6848	35,3	4000	596 x 596 x 99

Technical drawing:



Light and electrical features:

Light source	LED
Voltage	220..240 V, 50..60 Hz
Lifetime of LED sources [h]	100000 (1) / 147000 (2)
Lx/By	L80/B10 (1) / L70/B50 (2)
CRI	>80
SDCM (LED sources)	3
Operating temperature range [°C]	5 ÷ 30
Driver	standard on/off (E)
Power factor cos φ	>0,95

Mechanical features:

Assembly	mounted in module ceilings, as well as plasterboard ceilings
Material	steel sheet
Color	white
Diffuser	Micro-PRM SH (micro-prismatic diffuser PMMA with hardened glass) PLX (PMMA opal)

Note: The power shown refers to the whole system (tolerance +/- 10%).
The given luminous flux refers to LED light sources (tolerance +/- 10% depends on the value of the colour temperature).
Technical data may be changed. Photos of the luminaires may differ from reality.
Date of last update: 31-08-2022