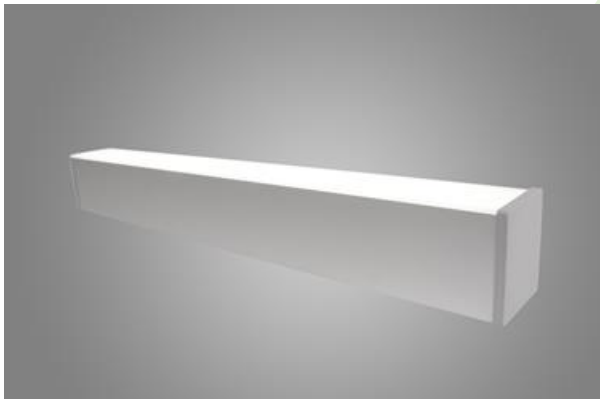


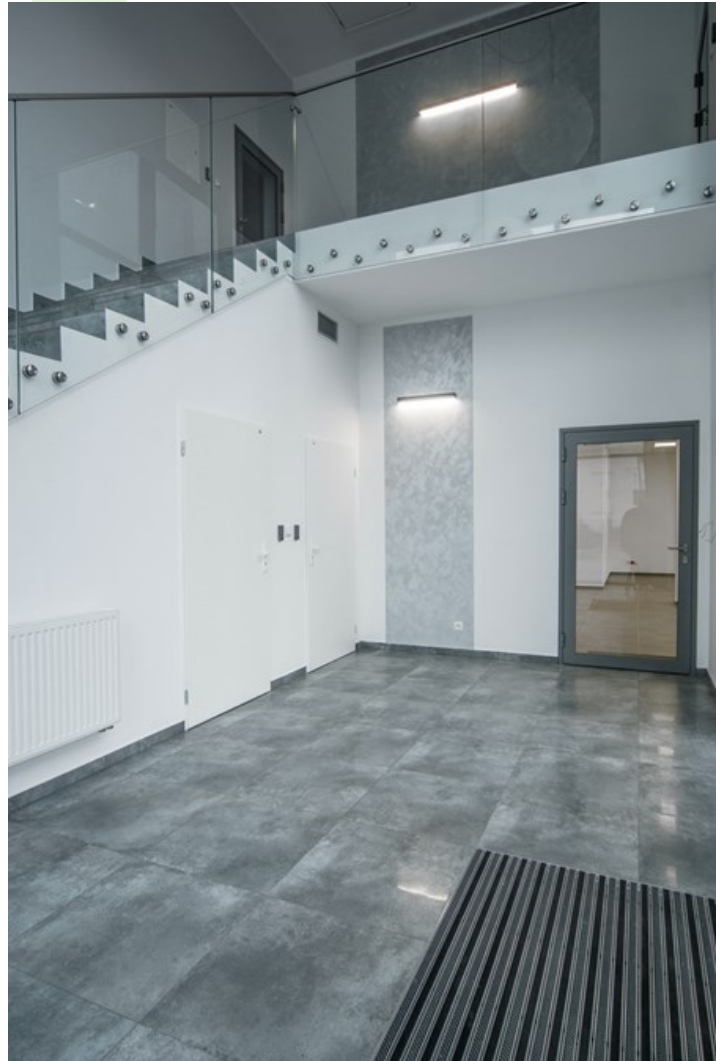


X-LINE WALL UP OR DOWN LED

Surface mounted luminaires



Luminaire to be mounted on wall. Its body made from anodized aluminum profile. Luminaire equipped with highly efficient LED sources. Its no frame diffuser is made from white polymethyl methacrylate with a great light transparency. Luminaire is characterized by high illumination efficacy. Purpose: offices, conference rooms, corridors, halls, etc.



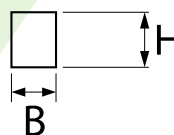
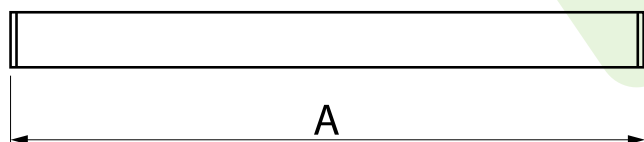
University of Jan Kochanowski, Kielce



Main parameters:

Name	Luminous flux LED [lm]	Power of luminaire [W]	Color [K]	Dimensions A x B x H [mm]
X-LINE WALL UP OR DOWN LED 1300	1349 / 1420	9	3000 / 4000	572 x 63 x 74
X-LINE WALL UP OR DOWN LED 1950	1895 / 1964	11,1	3000 / 4000	852 x 63 x 74
X-LINE WALL UP OR DOWN LED 2200	2203 / 2283	12,6	3000 / 4000	572 x 63 x 74
X-LINE WALL UP OR DOWN LED 2600	2617	14,4	4000	1132 x 63 x 74
X-LINE WALL UP OR DOWN LED 3300	3316 / 3436	19,2	3000 / 4000	852 x 63 x 74
X-LINE WALL UP OR DOWN LED 4400	4406 / 4565	24,7	3000 / 4000	1132 x 63 x 74
X-LINE WALL UP OR DOWN LED 6600	6608 / 6848	35,3	3000 / 4000	1692 x 63 x 74

Technical drawing:



Light and electrical features:

Light source	LED
Voltage	220..240 V, 50..60 Hz
Lifetime of LED sources [h]	100000 (1) / 147000 (2)
Lx/By	L80/B10 (1) / L70/B50 (2)
CRI	>80
SDCM (LED sources)	3
Operating temperature range [°C]	5 ÷ 30
Driver	standard on/off (E) DIM DALI (EDD) *
Power factor cos φ	>0,9 >0,95 *

* Variant to specify when ordering

Mechanical features:

Assembly	mounted on wall
Material	aluminum
Color	anodised aluminum
Diffuser	PLX (PMMA opal)

Additional information:

The luminaire can be made in CLO version.

Note: The power shown refers to the whole system (tolerance +/- 10%).
The given luminous flux refers to LED light sources (tolerance +/- 10% depends on the value of the colour temperature).
Technical data may be changed. Photos of the luminaires may differ from reality.
Date of last update: 21-11-2024