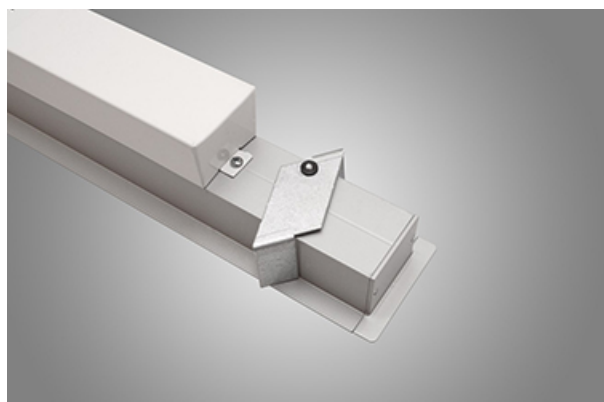




X-LINE SLIM RECESSED LOW UGR LED

Recessed luminaires



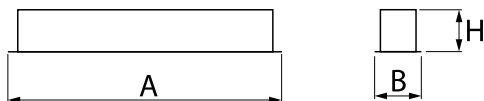
Luminaire made of aluminium profile. Compared to traditional X-Line G/K LED, the size has been reduced and the structure enclosed in a narrower profile, which allows a more elegant aspect of the product. X-Line Slim Recessed uses an anti-glare louvre. All this makes it possible to adjust light and create lighting systems, easing the creation of a comfortable view of indoor spaces and their aesthetics. X-Line Slim Recessed is designed for built-in installation on ceilings.



Main parameters:

| Name | Luminous flux LED [lm] | Power of luminaire [W] | Color [K] | Dimensions A x B x H [mm] |
|---|-------------------------|------------------------|-------------|---------------------------|
| X-LINE SLIM RECESSED LOW UGR LED 4200 | 4212 / 4432 | 25,5 | 3000 / 4000 | 1146 x 70 x 75 |
| X-LINE SLIM RECESSED LOW UGR LED 4200 TUNABLE WHITE | 3990÷4305 (2700÷6500 K) | 25,6 | 2700 ÷ 6500 | 1146 x 70 x 75 |
| X-LINE SLIM RECESSED LOW UGR LED 5250 | 5265 / 5540 | 31,8 | 3000 / 4000 | 1426 x 70 x 75 |

Technical drawing:



Light and electrical features:

| | |
|---|---|
| Light source | LED |
| Voltage | 220..240 V, 50..60 Hz |
| Lifetime of LED sources [h] | 100000/50000 |
| Lx/By | L80/B10 |
| CRI | >80 |
| SDCM (LED sources) | 3 |
| Photobiological risk class (IEC/EN 62471) | RG0 |
| Operating temperature range [°C] | 5 ÷ 35 |
| Driver | standard on/off (E) DIM DALI (EDD) * |
| Power factor cos φ | >0,95 |

* Variant to specify when ordering

Mechanical features:

| | |
|----------|--|
| Assembly | mounted in plasterboard ceilings |
| Material | aluminum |
| Color | RAL 9005 (black) RAL 9006 (grey) anodised aluminum RAL 9016 (white) * |
| Diffuser | RASTER (anti-glare louvre) |

Additional information:

The luminaire can be made in CLO version.

Note: The power shown refers to the whole system (tolerance +/- 10%).
The given luminous flux refers to LED light sources (tolerance +/- 10% depends on the value of the colour temperature).
Technical data may be changed. Photos of the luminaires may differ from reality.
Date of last update: 21-11-2024