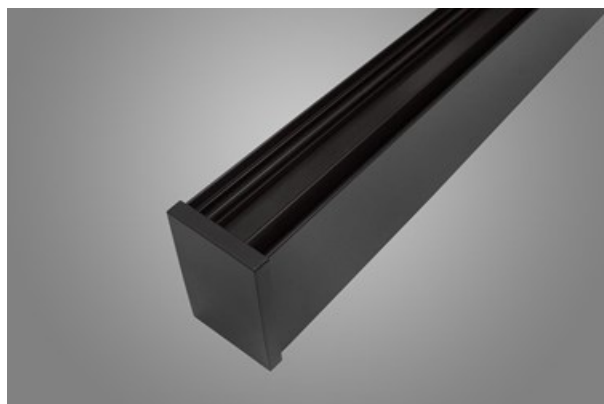




X-LINE SLIM LOW UGR L-DOWN LED UGR<19

UGR<19 luminaires



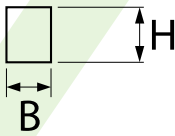
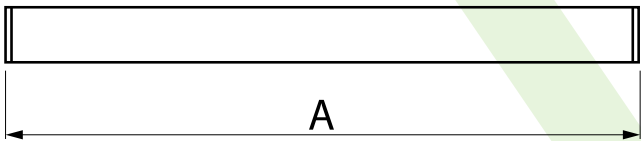
The luminaire is made of aluminum profile. Light distribution in the lower half-space. Comparing to the traditional X-Line LED, size of the luminaire has been reduced, and all construction has been closed in a narrow 48 mm profile, which gives now a more elegant form of the product. The X-Line Slim uses an anti-glare louvre. It allows to create lighting systems, facilitating the creation of comfortable vision in the interiors. The X-Line Slim luminaire is designed for mounting on suspensions.



Main parameters:

Name	Luminous flux LED [lm]	Power of luminaire [W]	Color [K]	Dimensions A x B x H [mm]
X-LINE SLIM LOW UGR L-DOWN LED 4200	4212 / 4432	25,5	3000 / 4000	1126 x 48 x 70
X-LINE SLIM LOW UGR L-DOWN LED 5250	5265 / 5540	31,8	3000 / 4000	1406 x 48 x 70
X-LINE SLIM LOW UGR L-DOWN LED 8400	8424 / 8864	50,9	3000 / 4000	2248 x 48 x 70

Technical drawing:



Light and electrical features:

Light source	LED
Voltage	220..240 V, 50..60 Hz
Lifetime of LED sources [h]	100000
Lx/By	L80/B10
CRI	>80
SDCM (LED sources)	3
Photobiological risk class (IEC/EN 62471)	RG0
Operating temperature range [°C]	5 ÷ 35
Driver	standard on/off (E) DIM DALI (EDD) *
Power factor cos φ	>0,95

* Variant to specify when ordering

Mechanical features:

Assembly	surface mounted on slings
Material	aluminum
Color	RAL 9005 (black) RAL 9006 (grey) anodised aluminum RAL 9016 (white) *
Diffuser	RASTER (anti-glare louvre)

Additional information:

The luminaire can be made in CLO version.

Note: The power shown refers to the whole system (tolerance +/- 10%).
The given luminous flux refers to LED light sources (tolerance +/- 10% depends on the value of the colour temperature).
Technical data may be changed. Photos of the luminaires may differ from reality.
Date of last update: 25-07-2025