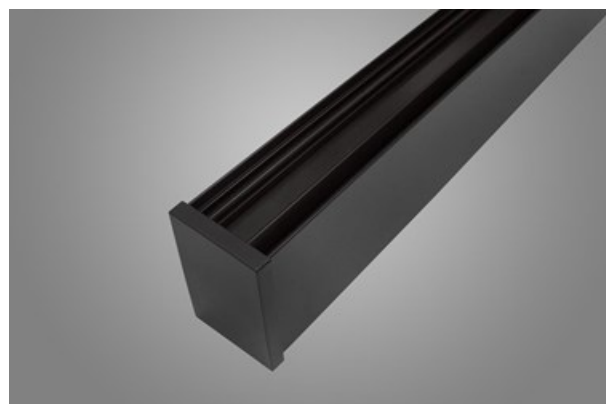




## X-LINE SLIM LOW UGR L-DOWN LED

### Surface mounted luminaires



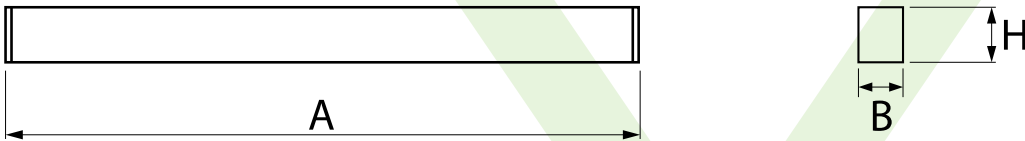
The luminaire is made of aluminum profile. Light distribution in the lower half-space. Comparing to the traditional X-Line LED, size of the luminaire has been reduced, and all construction has been closed in a narrow 48 mm profile, which gives now a more elegant form of the product. The X-Line Slim uses an anti-glare louvre. It allows to create lighting systems, facilitating the creation of comfortable vision in the interiors. The X-Line Slim luminaire is designed for mounting on suspensions.



Main parameters:

| Name                                | Luminous flux LED [lm] | Power of luminaire [W] | Color [K] | Dimensions A x B x H [mm] |
|-------------------------------------|------------------------|------------------------|-----------|---------------------------|
| X-LINE SLIM LOW UGR L-DOWN LED 4200 | 4432                   | 25,5                   | 4000      | 1126 x 48 x 70            |
| X-LINE SLIM LOW UGR L-DOWN LED 5250 | 5540                   | 31,8                   | 4000      | 1406 x 48 x 70            |
| X-LINE SLIM LOW UGR L-DOWN LED 8400 | 8864                   | 50,9                   | 4000      | 2248 x 48 x 70            |

Technical drawing:



Light and electrical features:

|   |   |
|---|---|
| Light source                              | LED                                     |
| Voltage                                   | 220..240 V, 50..60 Hz                   |
| Lifetime of LED sources [h]               | 100000                                  |
| Lx/By                                     | L80/B10                                 |
| CRI                                       | >80                                     |
| SDCM (LED sources)                        | 3                                       |
| Photobiological risk class (IEC/EN 62471) | RG0                                     |
| Operating temperature range [°C]          | 5 ÷ 35                                  |
| Driver                                    | standard on/off (E)<br>DIM DALI (EDD) * |
| Power factor cos φ                        | >0,95                                   |

\* Variant to specify when ordering

Mechanical features:

|          |   |
|----------|---|
| Assembly | surface mounted on slings                                   |
| Material | aluminum  |
| Color    | RAL 9005 (black)<br>anodised aluminum<br>RAL 9016 (white) * |
| Diffuser | RASTER (anti-glare louvre)                                  |

Additional information:

The luminaire can be made in CLO version.

Note: The power shown refers to the whole system (tolerance +/- 10%).  
The given luminous flux refers to LED light sources (tolerance +/- 10% depends on the value of the colour temperature).  
Technical data may be changed. Photos of the luminaires may differ from reality.  
Date of last update: 24-04-2024