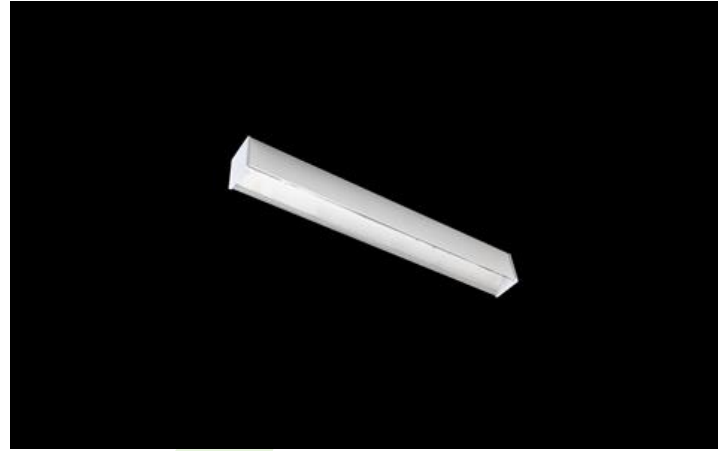


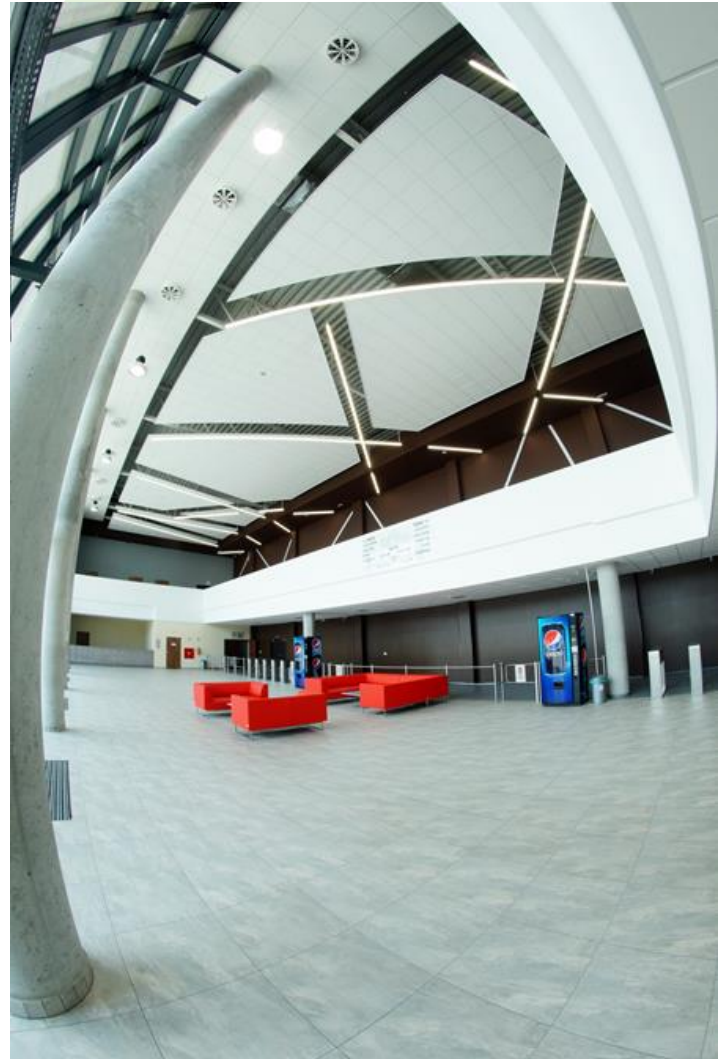


## X-LINE LED

Surface mounted luminaires



Light fitting made out of aluminium profile equipped with opal diffuser or MPRM and driver. X-LINE fittings are intended to be mounted on ceiling or pendants. In the family of X-LINE LED fittings modules of renowned brands are applied.



Trade Fair and Exhibition Center, Bydgoszcz



## Main parameters:

Name	Luminous flux LED [lm]	Power of luminaire [W]	Color [K]	Dimensions A x B x H [mm]
X-LINE LED 1300	1349 / 1420	9	3000 / 4000	572 x 63 x 74
X-LINE LED 2200	2203 / 2283	12,6	3000 / 4000	572 x 63 x 74
X-LINE LED 2600	2617 / 2525	14,4	4000 / 3000	1132 x 63 x 74
X-LINE LED 3250	3158 / 3273	18,3	3000 / 4000	1412 x 63 x 74
X-LINE LED 3900	3788 / 3926	21,7	3000 / 4000	1692 x 63 x 74
X-LINE LED 4400	4406 / 4565	24,7	3000 / 4000	1132 x 63 x 74
X-LINE LED 4400 TUNABLE WHITE	4304÷4574 (2700÷6500 K)	30÷32 (6500÷2700 K)	2700 ÷ 6500	1132 x 63 x 74
X-LINE LED 5200	5051 / 5234	28,2	3000 / 4000	2252 x 63 x 74
X-LINE LED 5500	5526 / 5727	30,5	3000 / 4000	1412 x 63 x 74
X-LINE LED 6500	6314 / 6543	34,8	3000 / 4000	2814 x 63 x 74
X-LINE LED 6600	6848 / 6608	35,3	4000 / 3000	1692 x 63 x 74
X-LINE LED 8800	8811 / 9130	49,1	3000 / 4000	2252 x 63 x 74
X-LINE LED 8800 TUNABLE WHITE	8608÷9148 (2700÷6500 K)	60÷64 (6500÷2700 K)	2700 ÷ 6500	2252 x 63 x 74

## Technical drawing:



## Light and electrical features:

Light source	LED
Voltage	220..240 V, 50..60 Hz
Lifetime of LED sources [h]	100000 (1) / 147000 (2)/50000
Lx/By	L80/B10 (1) / L70/B50 (2)/L80/B10
CRI	>80/>75
SDCM (LED sources)	3
Photobiological risk class (IEC/EN 62471)	RG0
Operating temperature range [°C]	5 ÷ 30
Driver	standard on/off (E) DIM DALI (EDD) *
Power factor cos $\varphi$	>0,9 >0,95 *

\* Variant to specify when ordering

## Mechanical features:

Assembly	directly mounted to ceiling construction or surface mounted on slings using accessories
Material	aluminum
Color	anodised aluminum
Diffuser	Micro-PRM (micro-prismatic diffuser PMMA) PLX (PMMA opal)

## Additional information:

The luminaire can be made in CLO version.

Note: The power shown refers to the whole system (tolerance +/- 10%).  
The given luminous flux refers to LED light sources (tolerance +/- 10% depends on the value of the colour temperature).  
Technical data may be changed. Photos of the luminaires may differ from reality.  
Date of last update: 01-07-2024