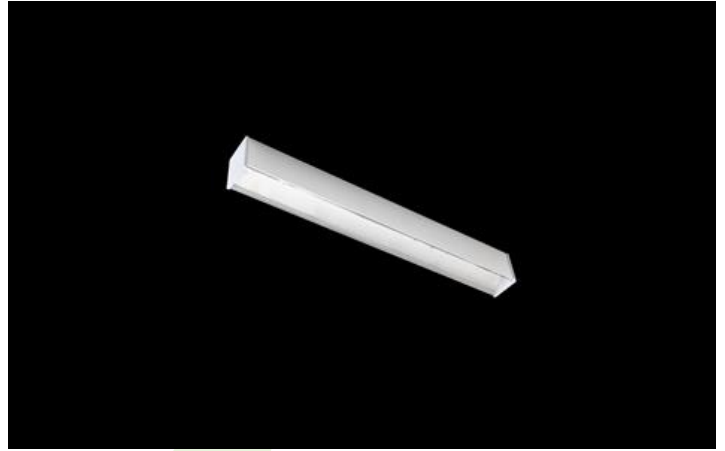


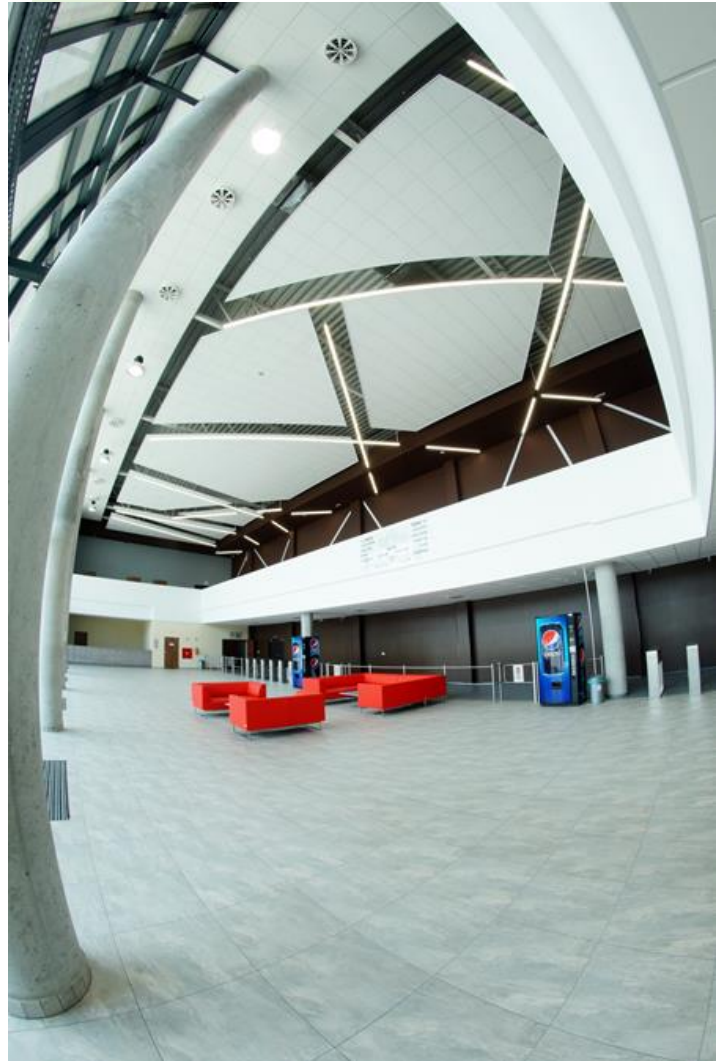


## X-LINE LED TUNABLE WHITE

Tunable White luminaires



Light fitting made out of aluminium profile equipped with opal diffuser or MPRM and driver. X-LINE fittings are intended to be mounted on ceiling or pendants. In the family of X-LINE LED fittings modules of renowned brands are applied. The luminaire is equipped with LED modules adjusted to regulate the color temperature of light in the range from 2700 K to 6500 K.



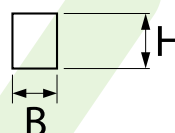
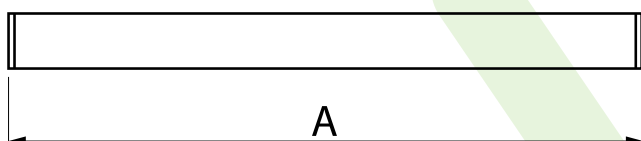
Trade Fair and Exhibition Center, Bydgoszcz



## Main parameters:

Name	Luminous flux LED [lm]	Power of luminaire [W]	Color [K]	Dimensions A x B x H [mm]
X-LINE LED 4400 TUNABLE WHITE	4304÷4574 (2700÷6500 K)	30÷32 (6500÷2700 K)	2700 ÷ 6500	1132 x 63 x 74
X-LINE LED 8800 TUNABLE WHITE	8608÷9148 (2700÷6500 K)	60÷64 (6500÷2700 K)	2700 ÷ 6500	2252 x 63 x 74

## Technical drawing:



## Light and electrical features:

Light source	LED
Voltage	220..240 V, 50..60 Hz
Lifetime of LED sources [h]	50000
Lx/By	L80/B10
CRI	>75
SDCM (LED sources)	3
Operating temperature range [°C]	5 ÷ 30
Driver	DIM DALI (EDD)
Power factor cos φ	>0,95

## Mechanical features:

Assembly	directly mounted to ceiling construction or surface mounted on slings
Material	aluminum
Color	anodised aluminum
Diffuser	Micro-PRM (micro-prismatic diffuser PMMA) PLX (PMMA opal)

## Additional information:

The luminaire can be made in CLO version.

Note: The power shown refers to the whole system (tolerance +/- 10%).  
The given luminous flux refers to LED light sources (tolerance +/- 10% depends on the value of the colour temperature).  
Technical data may be changed. Photos of the luminaires may differ from reality.  
Date of last update: 25-11-2024