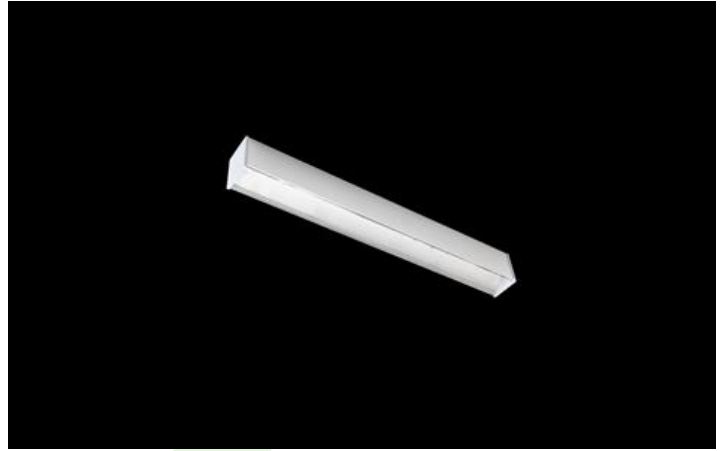


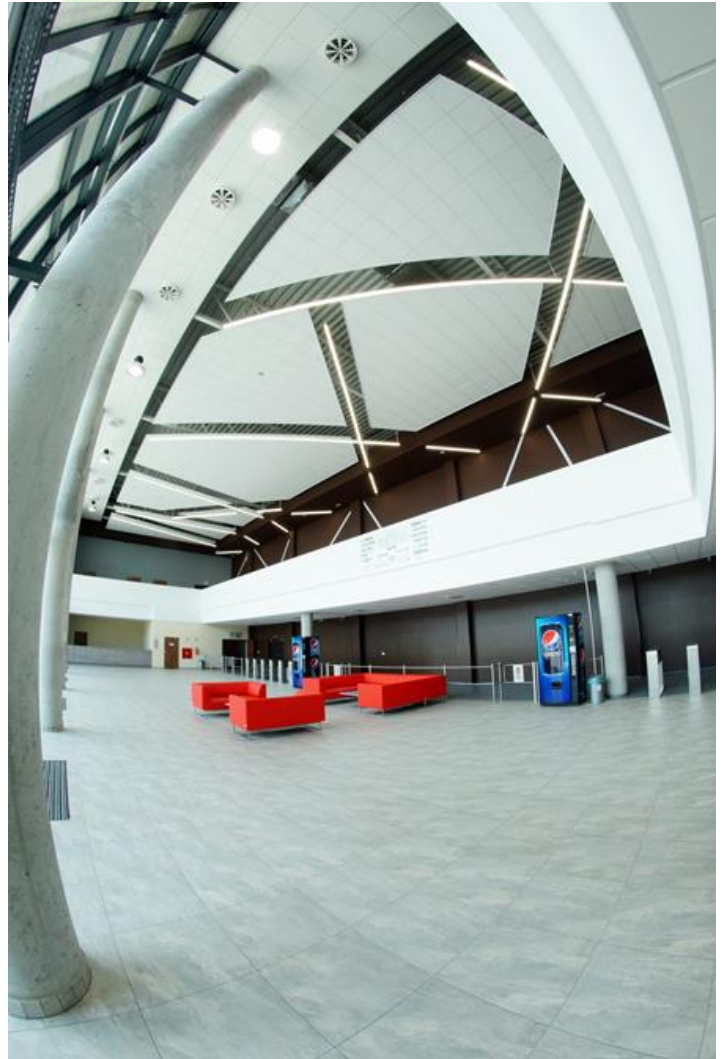


X-LINE LED COMPACT

Compact



Light fitting made out of aluminium profile equipped with opal diffuser or MPRM and driver. X-LINE fittings are intended to be mounted on ceiling or pendants. In the family of X-LINE LED fittings modules of renowned brands are applied.



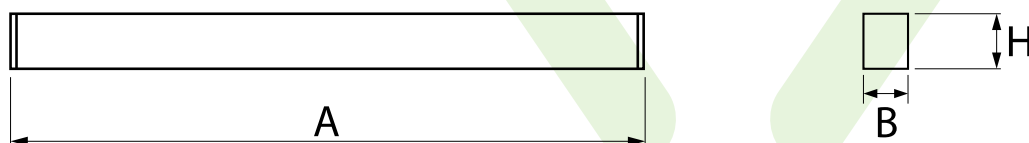
Trade Fair and Exhibition Center, Bydgoszcz



Main parameters:

Name	Luminous flux LED [lm]	Power of luminaire [W]	Color [K]	Dimensions A x B x H [mm]
X-LINE LED COMPACT 2000	2302	14	4000	572 x 63 x 74
X-LINE LED COMPACT 2600	3058 / 2590 / 2877	16,4 / 16,5	4000 / 3000	1132 x 63 x 74 / 1412 x 63 x 74
X-LINE LED COMPACT 4000	4118	27	4000	1132 x 63 x 74 / 1412 x 63 x 74
X-LINE LED COMPACT 5500	5200 / 5777	32	3000 / 4000	1412 x 63 x 74
X-LINE LED COMPACT 6000	6240	43	4000	1412 x 63 x 74

Technical drawing:



Light and electrical features:

Light source	LED
Voltage	220..240 V, 50..60 Hz
Lifetime of LED sources [h]	60000/90000
Lx/By	L80/B10
CRI	>80
SDCM (LED sources)	3
Operating temperature range [°C]	5 ÷ 30
Driver	standard on/off (E)
Power factor cos φ	>0,95 >0,98 *

* Variant to specify when ordering

Mechanical features:

Assembly	directly mounted to ceiling construction or surface mounted on slings using accessories
Material	aluminum
Color	anodised aluminum RAL 9005 (black) RAL 9016 (white) *
Diffuser	Micro-PRM (micro-prismatic diffuser PMMA) PLX (PMMA opal)

Note: The power shown refers to the whole system (tolerance +/- 10%).
The given luminous flux refers to LED light sources (tolerance +/- 10% depends on the value of the colour temperature).
Technical data may be changed. Photos of the luminaires may differ from reality.
Date of last update: 13-12-2024