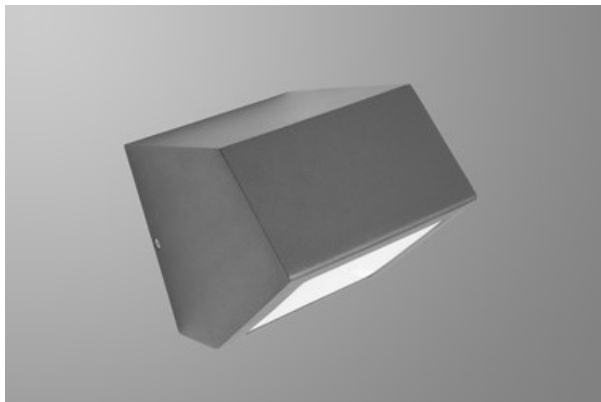




## UPDOOR MINI LED

Outdoor luminaires



Powder painted steel housing. Possibility of mounting emergency module. Isolated battery applied in luminaire is equipped with thermostat enabling performance in low temperature up to  $-25^{\circ}$  C. Updoor Mini might be mounted on walls or ceilings and is recommended to illuminate buildings' entrances, arteries, tunnels, underground entrances, etc.



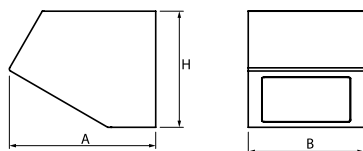
Local marketplace, Brwinów



## Main parameters:

Name	Luminous flux LED [lm]	Power of luminaire [W]	Color [K]	Dimensions A x B x H [mm]
UPDOOR MINI LED 2000	2055	14	4000	190 x 150 x 150

## Technical drawing:



## Light and electrical features:

Light source	LED
Voltage	220..240 V, 50..60 Hz
Lifetime of LED sources [h]	>100000
Lx/By	L80/B10
CRI	>80
SDCM (LED sources)	2
Operating temperature range [°C]	5÷30 / -25÷30 THERMOSTAT
Driver	standard on/off (E)
Power factor cos φ	>0,95

\* Variant to specify when ordering

## Mechanical features:

Assembly	mounted on wall
Material	steel sheet
Color	RAL 9005 (black) RAL 7016 (anthracite, metallic, fine structure) RAL 9016 (white) *
Diffuser	PC (opalescent polycarbonate)

Note: The power shown refers to the whole system (tolerance +/- 10%).  
The given luminous flux refers to LED light sources (tolerance +/- 10% depends on the value of the colour temperature).  
Technical data may be changed. Photos of the luminaires may differ from reality.  
Date of last update: 13-12-2024