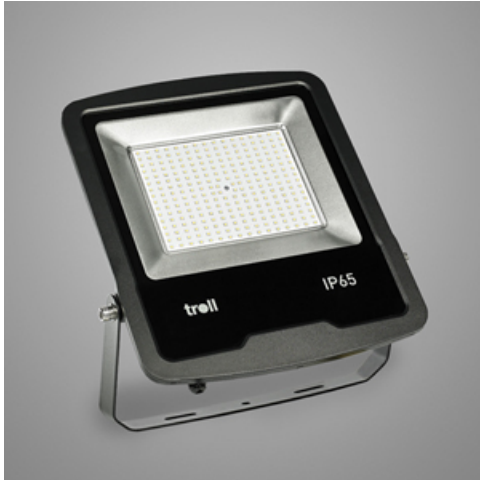


Product: FARGO 1300 120° E 04 IP65 840 10W

Index: 11.5100.2411.04



Description

LED outdoor projector from the family Fargo. Luminaire to be used as lighting outdoor parking's, warehouses, Building façades and all outdoor applications requiring light projection. Projector designed for wall surface mounted. Luminaire body built in die-cast aluminium with protective glass and finish in black. Luminaire has a degree of isolation vs. environment of IP65. Luminaire allows tilting of 90°. Luminaire adds in an PMMA lens system for each led with a protective transparent tempered glass and a beam angle of 120°.

Product information

Category	Industrial luminaires
Family	FARGO
Name	FARGO 1300 120° E 04 IP65 840 10W
Index	11.5100.2411.04

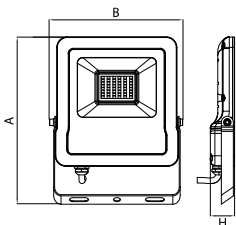


Light and electrical data

Light source	LED
Luminous flux LED [lm]	1426,8
LED power [W]	8,2
Luminaire luminous flux [lm]	1284,2
Power of luminaire [W]	9,6
Luminaire's light efficiency [lm/W]	133,8
Color of the light [K]	4000
CRI	>80
SDCM (LED sources)	3
Beam angle [°]	120°
Photobiological risk class (IEC/EN 62471)	RG0
Protection against electric shock	I
Protection degree	IP65
Voltage	220..240 V, 50..60 Hz
Lifetime of LED sources [h]	100000 (1) / 64000 (2)
Lx/By	L70/B10 (1) / L80/B10 (2)
Operating temperature range [°C]	-20 ÷ 45
Driver	standard on/off (E)
Power factor cos φ	0,95

Mechanical data

Assembly	mounted on wall
Material	aluminum
Color	RAL 9005 (black)
Diffuser	hardened transparent glass
Impact resistant	IK08
Dimensions [mm]	152 x 113 x 28



A graph of light

