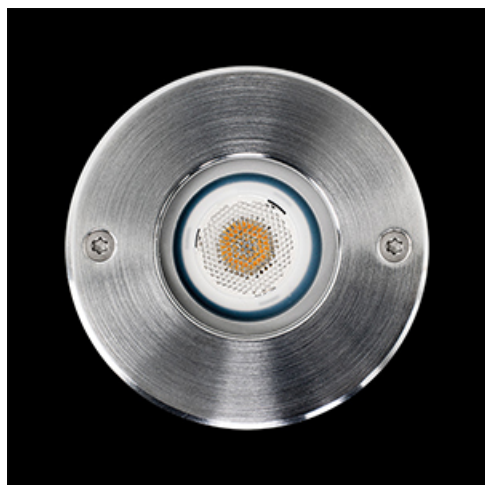


Product: MINI UP LED 3W E IP67 830 11.5200.0032.20

Index: 19TR115200003220



Description

Designed for inground installation. Body built in die-cast aluminium with the frontal made of tempered glass and stainless steel finished in polish steel. Luminaire is IP67 and IK08. Luminaire built-in an optical system based on synthetic material lenses with an angle beam of 20°.

Product information

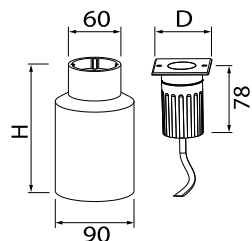
Category	Outdoor luminaires
Family	MINI UP LED
Name	MINI UP LED 3W E IP67 830 11.5200.0032.20
Index	19TR115200003220



Light and electrical data

Light source	LED
Luminous flux LED [lm]	182
LED power [W]	2
Luminaire luminous flux [lm]	152
Power of luminaire [W]	3
Luminaire's light efficiency [lm/W]	50,7
Color of the light [K]	3000
CRI	80
SDCM (LED sources)	3
Beam angle [°]	(C0-C180) / (C90-C270) - 30,2° / 28,2°
Protection against electric shock	I
Protection degree	IP67
Voltage	110..277 V, 50..60 Hz
Lifetime of LED sources [h]	50000
Lx/By	L70
Operating temperature range [°C]	-20 ÷ 35
Driver	standard on/off (E)

Mechanical data



Assembly	into the ground
Material	aluminum / stainless steel
Color	stainless steel
Diffuser	hardened transparent glass
Impact resistant	IK08
Weight [kg]	0,47
Dimensions [mm]	Ø65 x 150

A graph of light

