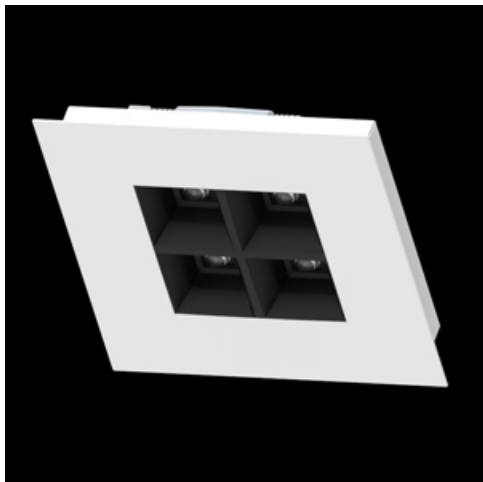


**Product:** DOMINO LOW UGR LED 600 RASTER DAISY-BLACK-WIDE E 34 840 / 150X150 RECESSED

**Index:** 19.4100.6521.34



## Description

LED luminaire dedicated to be mounted on cardboard suspended ceilings. Equipped with highly efficient LED light sources. The Domino LOW UGR LED uses an anti-glare louvre which reduces glare and directs light precisely. Housing made of steel sheet. Standard colour of the luminaire is white. Significant diversity of the value of luminous flux. Colour rendering index CRI: 80.

## Product information

Category	Recessed luminaires
Family	DOMINO LOW UGR LED
Name	DOMINO LOW UGR LED 600 RASTER DAISY-BLACK-WIDE E 34 840 / 150X150 RECESSED
Index	19.4100.6521.34



## Light and electrical data

Light source	LED
Luminous flux LED [lm]	709
LED power [W]	4,2
Luminaire luminous flux [lm]	588
Power of luminaire [W]	5,6
Luminaire's light efficiency [lm/W]	105
Color of the light [K]	4000
CRI	>80
SDCM (LED sources)	3
Beam angle [°]	(C0-C180) / (C90-C270) - 72,6° / 74,4°
Protection against electric shock	II
Protection degree	IP20
Voltage	220..240 V, 50..60 Hz
Lifetime of LED sources [h]	72000 (1) 72000 (2)
Lx/By	L80/B10 (1) / L70/B10 (2)
Operating temperature range [°C]	5 ÷ 30
Driver	standard on/off (E)
Power factor cos φ	>0,95
Circuit load capacity	16 (B10), 27 (B16), 27 (C10), 44 (C16)

## Mechanical data



Assembly	mounted in plasterboard ceilings
Material	steel sheet
Color	RAL 9016 (white)
Diffuser	RASTER (anti-glare louvre)
Impact resistant	IK04
Dimensions [mm]	150 x 150 x 43
Mounting hole [mm]	141 x 141

## A graph of light

