

**Product:** SNAKE V LED 2600 MICRO-PRM E 24 840

**Index:** 19.4093.3121.24



## Description

Luminaire equipped with the highly efficient LED source. Body made from aluminum profile. Optical system provides regular light distribution on diffuser. There are two kinds of diffusers available: opal and PMMA micro-prism. Luminaire adapted to be mounted on suspensions or directly on a solid ceiling construction. The suspended version is equipped with the suspension system which is 1500 mm long, and has the smooth regulation of the suspension length. These luminares may be dedicated to decorate the representative places such as: entrances, receptions, restaurants, halls, etc.

## Product information

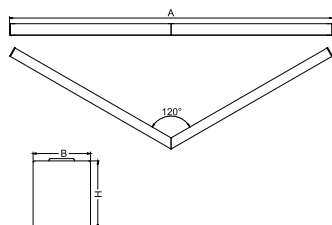
Category	Architectural luminaires
Family	SNAKE V LED
Name	SNAKE V LED 2600 MICRO-PRM E 24 840
Index	19.4093.3121.24



## Light and electrical data

Light source	LED
Luminous flux LED [lm]	2617
LED power [W]	13,3
Luminaire luminous flux [lm]	1971
Power of luminaire [W]	14,4
Luminaire's light efficiency [lm/W]	136,9
Color of the light [K]	4000
CRI	>80
SDCM (LED sources)	3
Beam angle [°]	(C0-C180) / (C90-C270) - 82,8° / 97,2°
Protection against electric shock	I
Protection degree	IP20
Voltage	220..240 V, 50..60 Hz
Lifetime of LED sources [h]	100000 (1) / 147000 (2)
Lx/By	L80/B10 (1) / L70/B50 (2)
Operating temperature range [°C]	5 ÷ 30
Driver	standard on/off (E)
Power factor cos φ	>0,95
Circuit load capacity	46 (B10), 74 (B16), 72 (C10), 115 (C16)

## Mechanical data



Assembly	directly mounted to ceiling construction or surface mounted on slings
Material	aluminum
Color	anodised aluminum
Diffuser	Micro-PRM (micro-prismatic diffuser PMMA)
Impact resistant	IK04
Weight [kg]	3,4
Dimensions [mm]	590/590 x 63 x 74

## A graph of light

