

**Product:** BERYL SURFACE NEW LED O-2 3600 PLX EDD 34 830**Index:** 19.4041.6213.34

## Description

Downlight surface mounted luminaire made of cast aluminum. Luminaire is dedicated for prestigious interiors such as hotels, banks and offices of higher standard. Owing to the newest components and renowned producers of LEDs applied it was possible to build such luminaires which save energy consumption comparing with traditional solutions.

## Product information

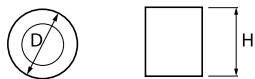
Category	Surface mounted luminaires
Family	BERYL SURFACE NEW LED O
Name	BERYL SURFACE NEW LED O-2 3600 PLX EDD 34 830
Index	19.4041.6213.34



## Light and electrical data

Light source	LED
Luminous flux LED [lm]	4179
LED power [W]	22,5
Luminaire luminous flux [lm]	2697
Power of luminaire [W]	25,5
Luminaire's light efficiency [lm/W]	105,8
Color of the light [K]	3000
CRI	80
SDCM (LED sources)	2
Beam angle [°]	(C0-C180) / (C90-C270) - 93,4° / 93,4°
Photobiological risk class (IEC/EN 62471)	RG0
Protection against electric shock	II
Protection degree	IP20
Voltage	220..240 V, 50..60 Hz
Lifetime of LED sources [h]	86000 (1) / 100000 (2) / 100000 (3)
Lx/By	L90/B10 (1) / L80/B10 (2) / L70/B10 (3)
Operating temperature range [°C]	5 ÷ 30
Driver	DIM DALI (EDD)
Power factor cos φ	>0,95
Circuit load capacity	50 (B10), 80 (B16), 61 (C10), 98 (C16)

## Mechanical data



Assembly	surface mounted on ceiling
Material	aluminum
Color	RAL 9016 (white)
Diffuser	PLX (PMMA opal)
Impact resistant	IK04
Weight [kg]	1,99
Dimensions [mm]	Ø185 x 156

## A graph of light

