

**Product:** BERYL SURFACE NEW LED O-1 1000 MICRO-PRM EDD 34 830

**Index:** 19.4041.2313.34



## Description

Downlight surface mounted luminaire made of cast aluminum. Luminaire is dedicated for prestigious interiors such as hotels, banks and offices of higher standard. Owing to the newest components and renowned producers of LEDs applied it was possible to build such luminaires which save energy consumption comparing with traditional solutions.

## Product information

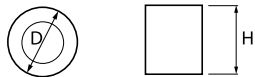
Category	Surface mounted luminaires
Family	BERYL SURFACE NEW LED O
Name	BERYL SURFACE NEW LED O-1 1000 MICRO-PRM EDD 34 830
Index	19.4041.2313.34



## Light and electrical data

Light source	LED
Luminous flux LED [lm]	1292
LED power [W]	8,3
Luminaire luminous flux [lm]	954
Power of luminaire [W]	9,8
Luminaire's light efficiency [lm/W]	97,3
Color of the light [K]	3000
CRI	85
SDCM (LED sources)	2
Beam angle [°]	(C0-C180) / (C90-C270) - 89,2° / 87,4°
Photobiological risk class (IEC/EN 62471)	RG0
Protection against electric shock	II
Protection degree	IP20
Voltage	220..240 V, 50..60 Hz
Lifetime of LED sources [h]	88000 (1) / 100000 (2) / 100000 (3)
Lx/By	L90/B10 (1) / L80/B10 (2) / L70/B10 (3)
Operating temperature range [°C]	5 ÷ 30
Driver	DIM DALI (EDD)
Power factor cos φ	>0,95
Circuit load capacity	80 (B10), 130 (B16), 100 (C10), 160 (C16)

**Mechanical data**



Assembly	<b>surface mounted on ceiling</b>
Material	<b>aluminum</b>
Color	<b>RAL 9016 (white)</b>
Diffuser	<b>Micro-PRM (micro-prismatic diffuser PMMA)</b>
Impact resistant	<b>IK04</b>
Weight [kg]	<b>0,95</b>
Dimensions [mm]	<b>Ø135 x 136</b>

**A graph of light**

