

Product: BERYL SURFACE LED COMPACT 2800 36° SH E 34 840**Index:** 19.3239.0033.34

Description

Small downlight ceiling luminaire. Several variants of the diffusers and different light distributions available. Simple assembly. Perfect for lighting corridors, reception, cloakrooms.

Product information

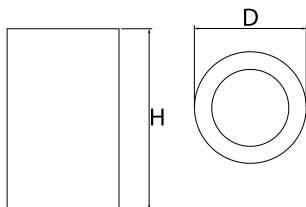
Category	Compact
Family	BERYL SURFACE LED COMPACT
Name	BERYL SURFACE LED COMPACT 2800 36° SH E 34 840
Index	19.3239.0033.34



Light and electrical data

Light source	LED
Luminous flux LED [lm]	3108
LED power [W]	16
Luminaire luminous flux [lm]	2263
Power of luminaire [W]	18
Luminaire's light efficiency [lm/W]	123
Color of the light [K]	4000
CRI	85
SDCM (LED sources)	3
Beam angle [°]	(C0-C180) / (C90-C270) - 36° / 33,2°
Protection against electric shock	I
Protection degree	IP20
Voltage	220..240 V, 50..60 Hz
Lifetime of LED sources [h]	91000 (1) / 100000 (2) / 100000 (3)
Lx/By	L90/B10 (1) / L80/B10 (2) / L70/B10 (3)
Operating temperature range [°C]	5 ÷ 30
Driver	standard on/off (E)
Power factor cos φ	>0,95
Circuit load capacity	29 (B10), 47 (B16), 49 (C10), 79 (C16)

Mechanical data



Assembly	surface mounted on ceiling
Material	aluminum
Color	RAL 9016 (white)
Diffuser	none
Impact resistant	IK04
Dimensions [mm]	Ø108 x 175

A graph of light

