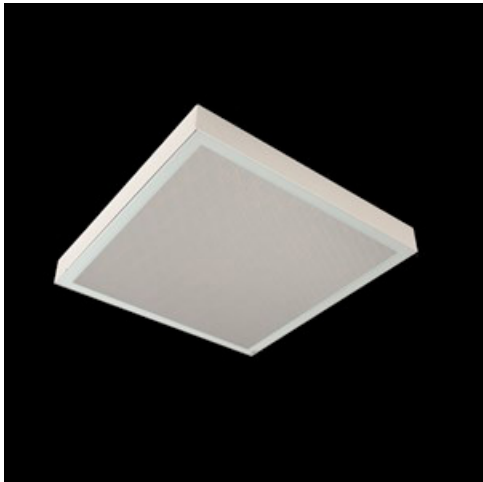


**Product:** RUBIN CLEAN CLASS 5-6 NO FRAME LED 8800 MICRO-PRM SL E IP65 840 KRG3K / 1200X300

**Index:** 19.3230.0047.34



## Description

Luminaire dedicated for the clean rooms of increased cleanliness class ISO 5-6. Surface mounted luminaire equipped in highly efficient LED panels. Luminaire body made from steel sheet, powder coated in white. Its characteristic feature is lack of aluminum frame what allows to exclude the unwished-for contamination in clean rooms. There are no visible elements joining the diffuser and the luminaire body.

## Product information

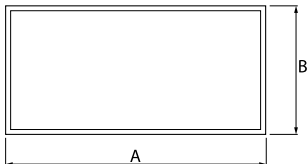
Category	Clean Class 3-9
Family	RUBIN CLEAN CLASS 5-6 NO FRAME LED
Name	RUBIN CLEAN CLASS 5-6 NO FRAME LED 8800 MICRO-PRM SL E IP65 840 KRG3K / 1200X300
Index	19.3230.0047.34



## Light and electrical data

Light source	LED
Luminous flux LED [lm]	9130
LED power [W]	46,8
Luminaire luminous flux [lm]	6487
Power of luminaire [W]	49,1
Luminaire's light efficiency [lm/W]	132,1
Color of the light [K]	4000
CRI	>80
SDCM (LED sources)	3
Beam angle [°]	(C0-C180) / (C90-C270) - 88° / 91,8°
Protection against electric shock	I
Protection degree	IP65
Voltage	220..240 V, 50..60 Hz
Lifetime of LED sources [h]	100000 (1) / 147000 (2)
Lx/By	L80/B10 (1) / L70/B50 (2)
Operating temperature range [°C]	5 ÷ 30
Driver	standard on/off (E)
Power factor cos φ	>0,95
Circuit load capacity	15 (B10), 25 (B16), 24 (C10), 38 (C16)

## Mechanical data



Assembly	surface mounted on ceiling
Material	steel sheet
Color	white
Diffuser	Micro-PRM SL (micro-prismatic diffuser PMMA with laminated glass)
Impact resistant	IK08
Dimensions [mm]	1174 x 274 x 69

## A graph of light

