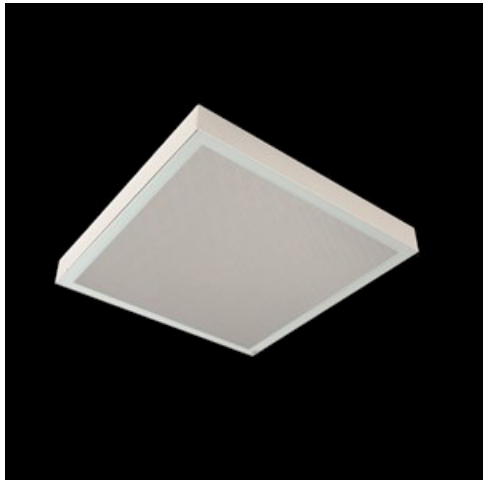


Product: RUBIN CLEAN NO FRAME LED CRI95 7200 SHM E IP65 940 / 600X600

Index: 19.3221.0008.34



Description

Luxiona Poland as the only company in Europe has obtained CRI>95 for its luminaires (it provides high level of R9 and R13 that faithfully render the color of blood and tissue). Luminaire recommended for operating theatres - lighting that is applied should faithfully render the color of blood, tissue, and skin (R9 responsible for rendering „deep red” color, and R13 responsible for rendering „light orange” color). Surface mounted luminaire equipped in highly efficient LED panels. Luminaire body made from steel sheet, powder coated in white. Its characteristic feature is lack of aluminum frame what allows to exclude the unwished-for contamination in clean rooms. There are no visible elements joining the diffuser and the luminaire body.

Product information

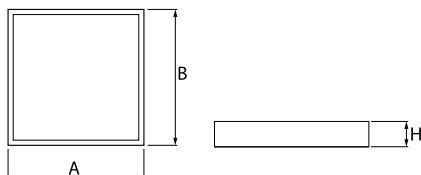
Category	Clean luminaires CRI95
Family	RUBIN CLEAN NO FRAME LED CRI95
Name	RUBIN CLEAN NO FRAME LED CRI95 7200 SHM E IP65 940 / 600X600
Index	19.3221.0008.34



Light and electrical data

Light source	LED
Luminous flux LED [lm]	7833
LED power [W]	49,6
Luminaire luminous flux [lm]	6305
Power of luminaire [W]	51,8
Luminaire's light efficiency [lm/W]	121,7
Color of the light [K]	4000
CRI	>95
SDCM (LED sources)	3
Beam angle [°]	(C0-C180) / (C90-C270) - 109,6° / 109,6°
Protection against electric shock	I
Protection degree	IP65
Voltage	220..240 V, 50..60 Hz
Lifetime of LED sources [h]	100000 (1) / 147000 (2)
Lx/By	L80/B10 (1) / L70/B50 (2)
Operating temperature range [°C]	5 ÷ 30
Driver	standard on/off (E)
Power factor cos φ	>0,95
Circuit load capacity	12 (B10), 20 (B16), 21 (C10), 34 (C16)

Mechanical data



Assembly	surface mounted on ceiling
Material	steel sheet
Color	white
Diffuser	SHM (hardened mat glass)
Impact resistant	IK08
Dimensions [mm]	574 x 574 x 69

A graph of light

