

Product: ANGLE 3700 60° E 33 830

Index: 19.3201.0021.33



Description

Adjustable round downlight designed for ceiling recessed installation. Luminaire body built in die-cast aluminium finished in grey or white. Product built-in an high bright especular reflector without irisation made of high purity aluminium with an angle beam of 20°, 40° or 60°. It is resistant to solids, dust, and liquids penetration – IP20/44. Luminaire sets a ball joint system which allows rotation 355° and tilting 70°. Product is optimised to be used as general and accent lighting for commercial areas shop-windows and different indoor spaces.

Product information

Category	Recessed luminaires
Family	ANGLE
Name	ANGLE 3700 60° E 33 830
Index	19.3201.0021.33

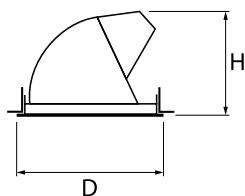


Light and electrical data

Light source	LED
Luminous flux LED [lm]	3624
LED power [W]	25
Luminaire luminous flux [lm]	2879
Power of luminaire [W]	28
Luminaire's light efficiency [lm/W]	102,8
Color of the light [K]	3000
CRI	82
SDCM (LED sources)	3
Beam angle [°]	(C0-C180) / (C90-C270) - 53,2° / 53,2°
Protection against electric shock	II
Protection degree	IP20/44
Voltage	220..240 V, 50..60 Hz
Lifetime of LED sources [h]	50000
Lx/By	L80/B10
Operating temperature range [°C]	5 ÷ 30
Driver	standard on/off (E)
Power factor cos φ	>0,95
Circuit load capacity	39 (B10), 62 (B16), 65 (C10), 104 (C16)

Mechanical data

Assembly	mounted in suspended ceiling
Material	aluminum
Color	RAL 9010 (white)
Diffuser	hardened transparent glass
Impact resistant	IK04
Dimensions [mm]	Ø151 x 125
Mounting hole [mm]	Ø143



A graph of light

