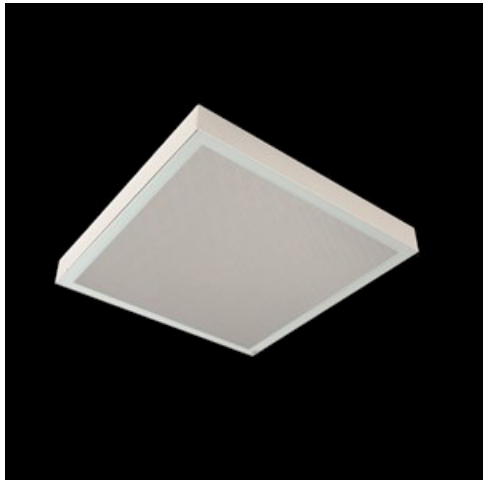


Product: RUBIN CLEAN NO FRAME LED 6500 SHM E IP65 840 / 600X600

Index: 19.3196.0023.34



Description

Surface mounted luminary equipped in highly efficient LED panels. Luminary body made from steel sheet, powder coated in white. Its characteristic feature is lack of aluminum frame what allows to exclude the unwished-for contamination in clean rooms. There are no visible elements joining the diffuser and the luminary body. Luminary recommended for: operating and treatment rooms, as well as intensive care units.

Product information

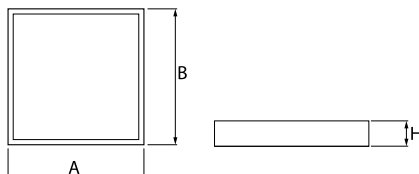
Category	Clean luminaires - surface
Family	RUBIN CLEAN NO FRAME LED
Name	RUBIN CLEAN NO FRAME LED 6500 SHM E IP65 840 / 600X600
Index	19.3196.0023.34



Light and electrical data

Light source	LED
Luminous flux LED [lm]	6543
LED power [W]	33,3
Luminaire luminous flux [lm]	5266
Power of luminaire [W]	34,8
Luminaire's light efficiency [lm/W]	151,3
Color of the light [K]	4000
CRI	>80
SDCM (LED sources)	3
Beam angle [°]	(C0-C180) / (C90-C270) - 109,6° / 109,6°
Protection against electric shock	I
Protection degree	IP65
Voltage	220..240 V, 50..60 Hz
Lifetime of LED sources [h]	100000 (1) / 147000 (2)
Lx/By	L80/B10 (1) / L70/B50 (2)
Operating temperature range [°C]	5 ÷ 30
Driver	standard on/off (E)
Power factor cos φ	>0,95
Circuit load capacity	30 (B10), 48 (B16), 43 (C10), 70 (C16)

Mechanical data



Assembly	surface mounted on ceiling
Material	steel sheet
Color	white
Diffuser	SHM (hardened mat glass)
Impact resistant	IK08
Dimensions [mm]	574 x 574 x 69

A graph of light

