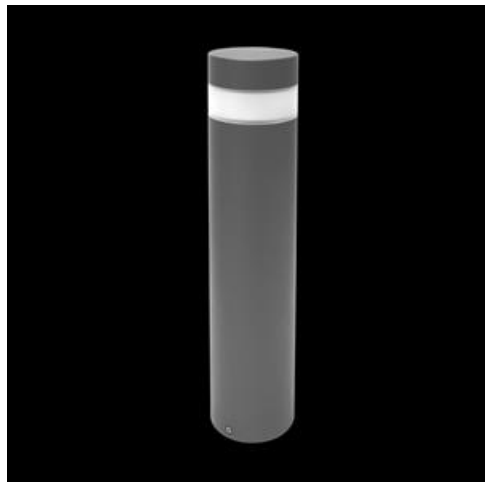


**Product:** TOSCA SLIM LED 900 2000 OPAL E 22 840**Index:** 19.3179.0002.22

## Description

Outdoor luminaire to be mounted on hard surface, equipped in the latest generation, highly efficient and energy saving LED sources. Aluminium made housing is corrosion resistant. Product is designated to efficient illumination of walking paths, parks, recreational areas, residential areas. Level of protection against penetration of dust, moisture and solids: IP65

## Product information

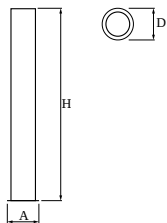
Category	Outdoor luminaires
Family	TOSCA SLIM LED
Name	TOSCA SLIM LED 900 2000 OPAL E 22 840
Index	19.3179.0002.22



## Light and electrical data

Light source	LED
Luminous flux LED [lm]	2140
LED power [W]	15
Luminaire luminous flux [lm]	1351
Power of luminaire [W]	17
Luminaire's light efficiency [lm/W]	79,5
Color of the light [K]	4000
CRI	>80
SDCM (LED sources)	3
Beam angle [°]	(C0-C180) / (C90-C270) - 96,4° / 94,6°
Protection against electric shock	I
Protection degree	IP65
Voltage	220..240 V, 50..60 Hz
Lifetime of LED sources [h]	50000
Lx/By	L90/B50
Operating temperature range [°C]	-20 ÷ 30
Driver	standard on/off (E)
Power factor cos φ	>0,95
Circuit load capacity	20 (B10), 30 (B16), 33 (C10), 53 (C16)

## Mechanical data



Assembly	for the ground
Material	aluminum
Color	RAL 9007 (dark gray, metallic, fine structure)
Diffuser	PMMA opal
Impact resistant	IK08
Weight [kg]	5,3
Dimensions [mm]	Ø120 x 900

## A graph of light

