

Product: TOSCA LED 600 2000 E 22 840**Index:** 19.3178.0004.22

Description

Outdoor luminaire to be mounted on hard surface (concrete, sett blocks or foundations) equipped in the latest generation, highly efficient and energy saving LED sources. Aluminium made housing is corrosion resistant. Product is designated to efficient illumination of walking paths, parks, recreational areas, residential areas. Level of protection against penetration of dust, moisture and solids: IP65

Product information

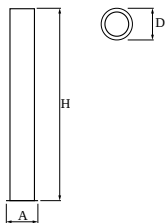
Category	Outdoor luminaires
Family	TOSCA LED
Name	TOSCA LED 600 2000 E 22 840
Index	19.3178.0004.22



Light and electrical data

Light source	LED
Luminous flux LED [lm]	2121
LED power [W]	13
Luminaire luminous flux [lm]	1339
Power of luminaire [W]	15
Luminaire's light efficiency [lm/W]	89,3
Color of the light [K]	4000
CRI	>80
SDCM (LED sources)	3
Beam angle [°]	(C0-C180) / (C90-C270) - 96,4° / 94,6°
Protection against electric shock	I
Protection degree	IP65
Voltage	220..240 V, 50..60 Hz
Lifetime of LED sources [h]	60000
Lx/By	L80/B10
Operating temperature range [°C]	-20 ÷ 30
Driver	standard on/off (E)
Power factor cos φ	>0,95
Circuit load capacity	29 (B10), 47 (B16), 49 (C10), 79 (C16)

Mechanical data



Assembly	for the ground
Material	aluminum
Color	RAL 9007 (dark gray, metallic, fine structure)
Diffuser	transparent polycarbonate
Impact resistant	IK08
Weight [kg]	6,6
Dimensions [mm]	Ø210 x 600

A graph of light

