

**Product:** TOSCA LED 300 2000 E 22 830

**Index:** 19.3178.0001.22



## Description

Outdoor luminaire to be mounted on hard surface (concrete, sett blocks or foundations) equipped in the latest generation, highly efficient and energy saving LED sources. Aluminium made housing is corrosion resistant. Product is designated to efficient illumination of walking paths, parks, recreational areas, residential areas. Level of protection against penetration of dust, moisture and solids: IP65

## Product information

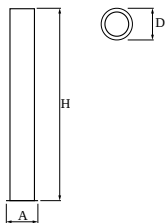
Category	<b>Outdoor luminaires</b>
Family	<b>TOSCA LED</b>
Name	<b>TOSCA LED 300 2000 E 22 830</b>
Index	<b>19.3178.0001.22</b>



## Light and electrical data

Light source	<b>LED</b>
Luminous flux LED [lm]	<b>1994</b>
LED power [W]	<b>13</b>
Luminaire luminous flux [lm]	<b>1258</b>
Power of luminaire [W]	<b>15</b>
Luminaire's light efficiency [lm/W]	<b>83,9</b>
Color of the light [K]	<b>3000</b>
CRI	<b>&gt;80</b>
SDCM (LED sources)	<b>3</b>
Beam angle [°]	<b>(C0-C180) / (C90-C270) - 96,4° / 94,6°</b>
Protection against electric shock	<b>I</b>
Protection degree	<b>IP65</b>
Voltage	<b>220..240 V, 50..60 Hz</b>
Lifetime of LED sources [h]	<b>60000</b>
Lx/By	<b>L80/B10</b>
Operating temperature range [°C]	<b>-20 ÷ 30</b>
Driver	<b>standard on/off (E)</b>
Power factor cos φ	<b>&gt;0,95</b>
Circuit load capacity	<b>29 (B10), 47 (B16), 49 (C10), 79 (C16)</b>

## Mechanical data



Assembly	<b>for the ground</b>
Material	<b>aluminum</b>
Color	<b>RAL 9007 (dark gray, metallic, fine structure)</b>
Diffuser	<b>transparent polycarbonate</b>
Impact resistant	<b>IK08</b>
Weight [kg]	<b>3,61</b>
Dimensions [mm]	<b>Ø210 x 300</b>

## A graph of light

