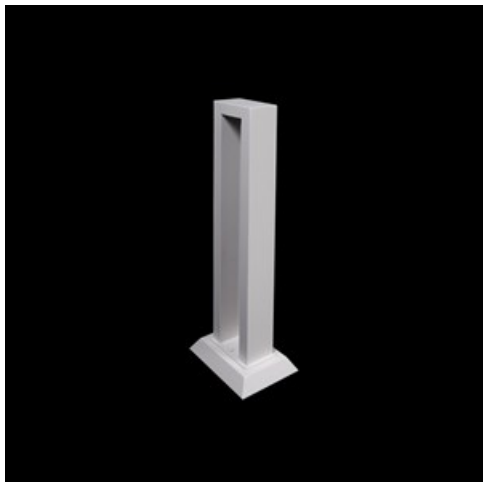


Product: KUBIK 2D LED 1800 SYM E IP65 25 840 / L-600**Index:** 19.3147.0002.25

Description

Outdoor luminaire to be mounted on dedicated foundation (version 900mm) or directly on paved basis (version 300mm and 600mm). The product is equipped with the newest generation of highly efficient LED light sources. LED module is additionally sealed with a special lens which at the same time ensures optimal wide light distribution. The housing is resistant to corrosion and is made of aluminum lacquered with facade paint. The product is dedicated for decorative illumination of walking paths, parks, recreational areas, residential areas, gardens and allotment gardens. The level of protection against solid substances, dust and moisture penetration is: IP65

Product information

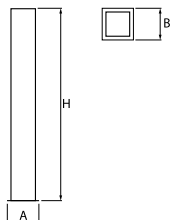
| | |
|----------|---|
| Category | Outdoor luminaires |
| Family | KUBIK 2D LED |
| Name | KUBIK 2D LED 1800 SYM E IP65 25 840 / L-600 |
| Index | 19.3147.0002.25 |



Light and electrical data

| | |
|-------------------------------------|---|
| Light source | LED |
| Luminous flux LED [lm] | 2268 |
| LED power [W] | 11,1 |
| Luminaire luminous flux [lm] | 1543 |
| Power of luminaire [W] | 12,5 |
| Luminaire's light efficiency [lm/W] | 123,4 |
| Color of the light [K] | 4000 |
| CRI | >80 |
| SDCM (LED sources) | 2 |
| Beam angle [°] | asymmetric light distribution |
| Protection against electric shock | I |
| Protection degree | IP65 |
| Voltage | 220..240 V, 50..60 Hz |
| Lifetime of LED sources [h] | 83000 (1) / 100000 (2) / 100000 (3) |
| Lx/By | L90/B10 (1) / L80/B10 (2) / L70/B10 (3) |
| Operating temperature range [°C] | -25 ÷ 30 |
| Driver | standard on/off (E) |
| Power factor cos φ | >0,95 |
| Circuit load capacity | 15 (B10), 25 (B16), 25 (C10), 40 (C16) |

Mechanical data



| | |
|------------------|---|
| Assembly | for the ground |
| Material | aluminum |
| Color | RAL 7016 (anthracite, metallic, fine structure) |
| Diffuser | none |
| Impact resistant | IK03 |
| Weight [kg] | 2,8 |
| Dimensions [mm] | 200 x 120 x 600 |

A graph of light

