

Product: FILAR LED 5000 E 04 840 / L-2500

Index: 19.3145.0001.04



Description

Architect luminaires designed for illuminating public green areas such as: parks, squares or lawns. Other important places of applying post lighting fittings is immediate vicinity of public buildings, office buildings and car parks but also green belts along parade lanes, nearness of garden cafes, open spaces in front of cinemas, theatres, hotels and many other places within a urban area. Base made of aluminium, diffuser tube of acrylic satin. Luminary is equipped with LED panel of high luminous efficacy. The type and dimensions of the foundation each time depend on the foundation conditions. The final selection of the foundation, in accordance with the Building Law, is the responsibility of the designer of the object.

Product information

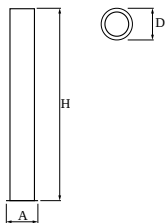
Category	Outdoor luminaires
Family	FILAR LED
Name	FILAR LED 5000 E 04 840 / L-2500
Index	19.3145.0001.04



Light and electrical data

Light source	LED
Luminous flux LED [lm]	5600
LED power [W]	56
Luminaire luminous flux [lm]	2933
Power of luminaire [W]	63
Luminaire's light efficiency [lm/W]	46,6
Color of the light [K]	4000
CRI	>80
SDCM (LED sources)	3
Beam angle [°]	(C0-C180) / (C90-C270) - 86° / 86,8°
Protection against electric shock	I
Protection degree	IP65
Voltage	220..240 V, 50..60 Hz
Lifetime of LED sources [h]	36000
Lx/By	L70/B50
Operating temperature range [°C]	-25 ÷ 30
Driver	standard on/off (E)
Power factor cos φ	>0,95
Circuit load capacity	10 (B10), 16 (B16), 17 (C10), 29 (C16)

Mechanical data



Assembly	for the ground
Material	aluminum
Color	RAL 9005 (black)
Diffuser	acrilsatine
Impact resistant	IK10
Weight [kg]	19
Dimensions [mm]	300 x 300 x 2545

A graph of light

