

**Product:** FASAD WALL LED 1100 SH SYM FLOOD E IP65 830 / L-364mm

**Index:** 19.3144.0007.00



## Description

Weather proof powder painted aluminum housing. Clear stainless steel diffuser. Luminaire is equipped with adjustment allowing proper light flux operation. LED panels are applied as light sources. Recommended for walls and solid base. Fasad Wall LED is dedicated to illuminate walls of architectural objects.

## Product information

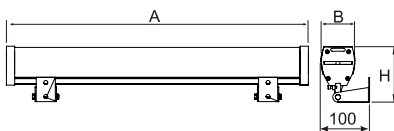
Category	<b>Outdoor luminaires</b>
Family	<b>FASAD WALL LED</b>
Name	<b>FASAD WALL LED 1100 SH SYM FLOOD E IP65 830 / L-364mm</b>
Index	<b>19.3144.0007.00</b>



## Light and electrical data

Light source	<b>LED</b>
Luminous flux LED [lm]	<b>1103</b>
LED power [W]	<b>6</b>
Luminaire luminous flux [lm]	<b>1035</b>
Power of luminaire [W]	<b>7</b>
Luminaire's light efficiency [lm/W]	<b>147,9</b>
Color of the light [K]	<b>3000</b>
CRI	<b>&gt;80</b>
SDCM (LED sources)	<b>3</b>
Beam angle [°]	<b>(C0-C180) / (C90-C270) - 66° / 95°</b>
Protection against electric shock	<b>I</b>
Protection degree	<b>IP65</b>
Voltage	<b>220..240 V, 50..60 Hz</b>
Lifetime of LED sources [h]	<b>100000 (1) / 147000 (2)</b>
Lx/By	<b>L80/B10 (1) / L70/B50 (2)</b>
Operating temperature range [°C]	<b>-25 ÷ 30</b>
Driver	<b>standard on/off (E)</b>
Power factor cos φ	<b>&gt;0,95</b>
Circuit load capacity	<b>46 (B10), 74 (B16), 72 (C10), 115 (C16)</b>

## Mechanical data



Assembly	<b>mounted on wall</b>
Material	<b>aluminum</b>
Color	<b>gray</b>
Diffuser	<b>SH (transparent hardened glass)</b>
Impact resistant	<b>IK09</b>
Dimensions [mm]	<b>364 x 62 x 114</b>

## A graph of light

