

Product: ATENA LINE NEW OUTDOOR LED 12000 SH MEDIUM E IP65 04 840 / UCHWYT OBROTOWY

Index: 19.3138.0004.04



Description

Outdoor luminaire dedicated for pole mounting, ceiling mounting or for hanging mounting. The external application is possible due to the fact that the product is equipped with a pressure compensation valve, and the housing has a special painting adapted to the external conditions. Rectangular housing made of aluminum sheet. Only one colour available: RAL 9005 (black). Upon client request there is a possibility to make longer luminaire than standard dimensions. Consequently, the luminaire will have bigger luminous flux. The light sources are protected by diffuser made of hardened glass and the whole construction is characterized by high level of protection against dust and water penetration-IP65.

Product information

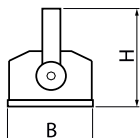
Category	Outdoor luminaires
Family	ATENA LINE NEW OUTDOOR LED
Name	ATENA LINE NEW OUTDOOR LED 12000 SH MEDIUM E IP65 04 840 / UCHWYT OBROTOWY
Index	19.3138.0004.04



Light and electrical data

Light source	LED
Luminous flux LED [lm]	11832
LED power [W]	74
Luminaire luminous flux [lm]	10050
Power of luminaire [W]	83
Luminaire's light efficiency [lm/W]	121,1
Color of the light [K]	4000
CRI	>80
SDCM (LED sources)	3
Beam angle [°]	(C0-C180) / (C90-C270) - 57,6° / 56,2°
Protection against electric shock	I
Protection degree	IP65
Voltage	220..240 V, 50..60 Hz
Lifetime of LED sources [h]	83000
Lx/By	L90/B10
Operating temperature range [°C]	-25 ÷ 40
Driver	standard on/off (E)
Power factor cos φ	>0,95
Circuit load capacity	14 (B10), 22 (B16), 14 (C10), 22 (C16)

Mechanical data



Assembly	mounted on poles; directly mounted to ceiling construction or surface mounted on slings
Material	aluminum
Color	RAL 9005 (black)
Diffuser	SH (transparent hardened glass)
Impact resistant	IK08
Weight [kg]	5,73
Dimensions [mm]	430 x 201 x 190

A graph of light

