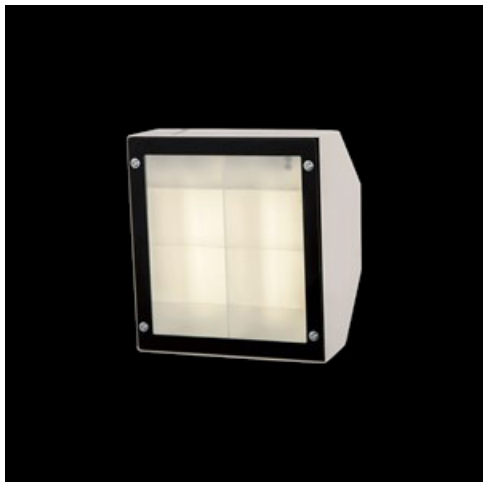


**Product:** UPDOOR 1500 LED SHM E IP65 34 840**Index:** 19.3136.0001.34

## Description

Powder painted steel housing. Possibility of mounting emergency module. Isolated battery applied in luminaire is equipped with thermostat enabling performance in low temperature up to -20° C. UPDOOR might be mounted on walls or ceilings and is recommended to illuminate buildings' entrances, arteries, tunnels, underground entrances, etc.

## Product information

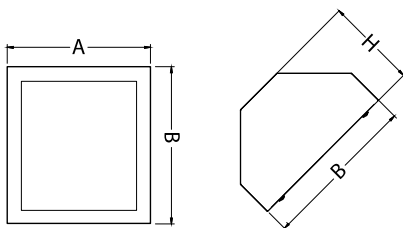
Category	Outdoor luminaires
Family	UPDOOR LED
Name	UPDOOR 1500 LED SHM E IP65 34 840
Index	19.3136.0001.34



## Light and electrical data

Light source	LED
Luminous flux LED [lm]	1485
LED power [W]	9
Luminaire luminous flux [lm]	1195
Power of luminaire [W]	10
Luminaire's light efficiency [lm/W]	119,5
Color of the light [K]	4000
CRI	>80
SDCM (LED sources)	3
Beam angle [°]	asymmetric light distribution - Imax=-45°
Protection against electric shock	I
Protection degree	IP65
Voltage	220..240 V, 50..60 Hz
Lifetime of LED sources [h]	60000
Lx/By	L70/B50
Operating temperature range [°C]	-20 ÷ 30
Driver	standard on/off (E)
Power factor cos φ	>0,95
Circuit load capacity	61 (B10), 98 (B16), 102 (C10), 164 (C16)

## Mechanical data



Assembly	mounted on wall
Material	steel sheet
Color	RAL 9016 (white)
Diffuser	SHM (hardened mat glass)
Impact resistant	IK10
Weight [kg]	3
Dimensions [mm]	242 x 266 x 154

## A graph of light

