

**Product:** AGALINE LED 3R 21600 OPTICS-2 E 34 IP65 840 / L-1860MM

**Index:** 19.3121.0015.34



## Description

Agaline 3R is a single linear luminaire designed for mounting on slings. The body is made of white powder-coated steel sheet. Optical system based on lenses providing different light distribution. High level of protection against penetration of dust and water - IP65. Agaline is an excellent solution for lighting industrial facilities and warehouses, but also finds application in offices, supermarkets and shops.

## Product information

Category	Industrial luminaires
Family	AGALINE LED 3R
Name	AGALINE LED 3R 21600 OPTICS-2 E 34 IP65 840 / L-1860MM
Index	19.3121.0015.34

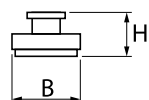
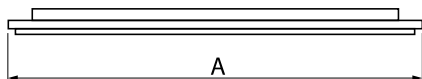


## Light and electrical data

Light source	LED
Luminous flux LED [lm]	21240
LED power [W]	140
Luminaire luminous flux [lm]	21236
Power of luminaire [W]	157
Luminaire's light efficiency [lm/W]	135,3
Color of the light [K]	4000
CRI	>80
SDCM (LED sources)	3
Beam angle [°]	(C0-C180) / (C90-C270) - 43,6° / 83,2°
Protection against electric shock	I
Protection degree	IP65
Voltage	220..240 V, 50..60 Hz
Lifetime of LED sources [h]	>54000
Lx/By	L80B10
Operating temperature range [°C]	5 ÷ 30
Driver	standard on/off (E)
Power factor cos φ	>0,95
Circuit load capacity	14 (B10), 22 (B16), 14 (C10), 22 (C16)

## Mechanical data

Assembly	surface mounted on slings
Material	steel sheet
Color	RAL 9016 (white)
Diffuser	OPTICS (optical system based on lenses)
Impact resistant	IK04
Dimensions [mm]	1860 x 95 x 68



## A graph of light

