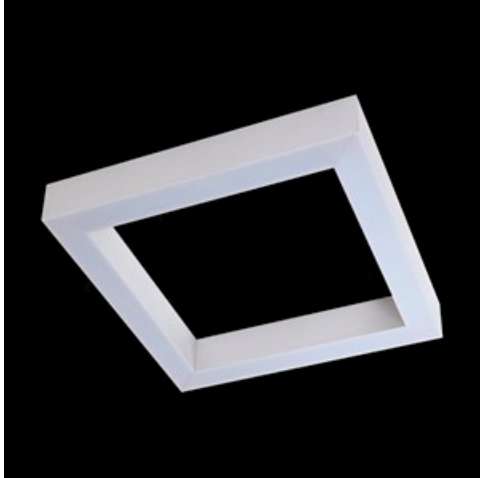


Product: X-LINE SQ SURFACE LED 5200 MICRO-PRM EDD 24 830

Index: 19.3115.0001.24



Description

Luminaire made from aluminum profile adapted to be mounted on suspensions, or directly on a solid ceiling construction. LED sources of the high illumination efficacy, and the color temperature of 3000 K or 4000 K, make the light source. Diode illumination stream is 5200 lm or 8800 lm. PMMA opal or micro prism diffuser available. Luminaire to be used in offices, conference halls, all structures of public sectors.

Product information

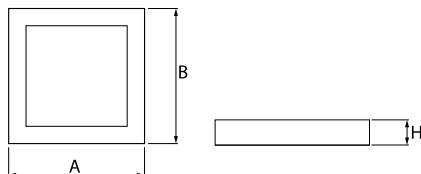
Category	Surface mounted luminaires
Family	X-LINE SQ SURFACE LED
Name	X-LINE SQ SURFACE LED 5200 MICRO-PRM EDD 24 830
Index	19.3115.0001.24



Light and electrical data

Light source	LED
Luminous flux LED [lm]	5051
LED power [W]	26,6
Luminaire luminous flux [lm]	3804
Power of luminaire [W]	28,2
Luminaire's light efficiency [lm/W]	134,9
Color of the light [K]	3000
CRI	>80
SDCM (LED sources)	3
Beam angle [°]	(C0-C180) / (C90-C270) - 82,8° / 97,2°
Protection against electric shock	I
Protection degree	IP20
Voltage	220..240 V, 50..60 Hz
Lifetime of LED sources [h]	100000 (1) / 147000 (2)
Lx/By	L80/B10 (1) / L70/B50 (2)
Operating temperature range [°C]	5 ÷ 30
Driver	DIM DALI (EDD)
Power factor cos φ	>0,95
Circuit load capacity	17 (B10), 28 (B16), 26 (C10), 41 (C16)

Mechanical data



Assembly	directly mounted to ceiling construction or surface mounted on slings
Material	aluminum
Color	anodised aluminum
Diffuser	Micro-PRM (micro-prismatic diffuser PMMA)
Impact resistant	IK04
Weight [kg]	5,8
Dimensions [mm]	642 x 642 x 72

A graph of light

