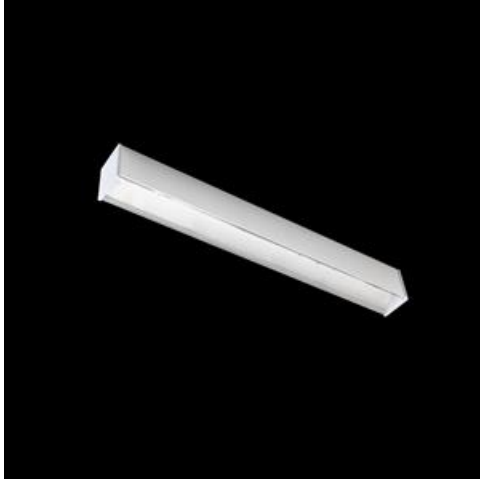


Product: X-LINE LED 4400 PLX EDD 24 830 LINE-1EP / L-1127MM

Index: 19.3103.0139.24



Description

Light fitting made out of aluminium profile equipped with opal diffuser or MPRM and driver. X-LINE fittings are intended to be mounted on ceiling or pendants. The luminaires are adjusted to be linked together with specially designed links, which provide great freedom in arranging elements of the system as well as great functionality. In the family of X-LINE LED fittings modules of renowned brands are applied.

Product information

Category	Surface mounted luminaires
Family	X-LINE LED LINE
Name	X-LINE LED 4400 PLX EDD 24 830 LINE-1EP / L-1127MM
Index	19.3103.0139.24



Light and electrical data

Light source	LED
Luminous flux LED [lm]	4406
LED power [W]	23,4
Luminaire luminous flux [lm]	2937
Power of luminaire [W]	24,7
Luminaire's light efficiency [lm/W]	118,9
Color of the light [K]	3000
CRI	>80
SDCM (LED sources)	3
Beam angle [°]	(C0-C180) / (C90-C270) - 109° / 107,2°
Photobiological risk class (IEC/EN 62471)	RG0
Protection against electric shock	I
Protection degree	IP44
Voltage	220..240 V, 50..60 Hz
Lifetime of LED sources [h]	100000 (1) / 147000 (2)
Lx/By	L80/B10 (1) / L70/B50 (2)
Operating temperature range [°C]	5 ÷ 30
Driver	DIM DALI (EDD)
Power factor cos φ	>0,95
Circuit load capacity	17 (B10), 28 (B16), 26 (C10), 41 (C16)

Mechanical data



Assembly	directly mounted to ceiling construction or surface mounted on slings
Material	aluminum
Color	anodised aluminum
Diffuser	PLX (PMMA opal)
Impact resistant	IK04
Dimensions [mm]	1127 x 63 x 74

A graph of light

