

**Product:** ARUNA SLIM SUSPENDED LED 8000 OPTICS-3L E 34 840 / L-1200 S-1,5M**Index:** 19.3045.2304.34

## Description

LED luminary dedicated to be mounted on suspended modular ceilings or using an adaptor frame in plasterboard ceilings (Aruna Slim M LED), directly on the ceiling (Aruna Slim Surface LED) or using slings (Aruna Slim Suspended LED). Equipped with highly efficient LED light sources. Symmetric or asymmetric light distribution. Housing made of steel sheet. Standard colour of the luminaire is white. Colour rendering index CRI: 80.

## Product information

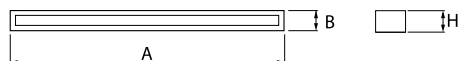
Category	Surface mounted luminaires
Family	ARUNA SLIM SUSPENDED LED
Name	ARUNA SLIM SUSPENDED LED 8000 OPTICS-3L E 34 840 / L-1200 S-1,5M
Index	19.3045.2304.34



## Light and electrical data

Light source	LED
Luminous flux LED [lm]	8330
LED power [W]	51
Luminaire luminous flux [lm]	6367
Power of luminaire [W]	57
Luminaire's light efficiency [lm/W]	111,7
Color of the light [K]	4000
CRI	>80
SDCM (LED sources)	3
Beam angle [°]	asymmetric light distribution - Imax=-18°
Protection against electric shock	I
Protection degree	IP20
Voltage	220..240 V, 50..60 Hz
Lifetime of LED sources [h]	100000 (1) / 147000 (2)
Lx/By	L80/B10 (1) / L70/B50 (2)
Operating temperature range [°C]	5 ÷ 30
Driver	standard on/off (E)
Power factor cos φ	>0,95
Circuit load capacity	16 (B10), 26 (B16), 23 (C10), 37 (C16)

## Mechanical data



Assembly	surface mounted on slings
Material	steel sheet
Color	RAL 9016 (white)
Diffuser	OPTICS (optical system based on lenses)
Impact resistant	IK04
Weight [kg]	2,9
Dimensions [mm]	1193 x 80 x 43

## A graph of light

