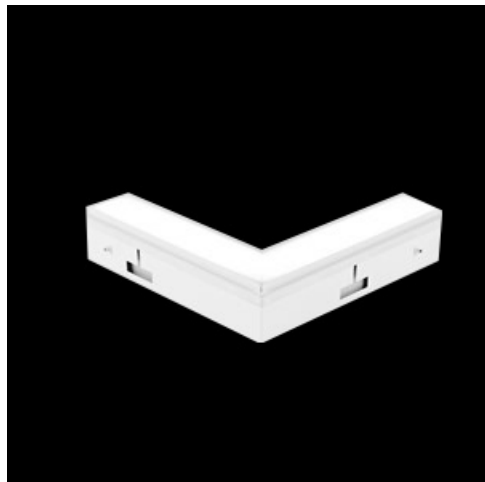


**Product:** PATOS-LINE LED 4400 PLX EDD 830 LINE-1S / CONNECTOR TYPE-LB 600/600

**Index:** 19.0032.0217.34



## Description

Nowadays architectural lighting should embody an irreproachable style and high quality of lighting parameters. A luminaire is expected to be exceptional in respect of its design – simple and elegant. Patos is designed for lighting galleries, museums, offices, clubs, restaurants and hotels; it gives any interior individual modern character. Fitting designed for suspended plasterboard ceilings, adapted to befit the ceiling surface. Body made of aluminium profile, prismatic diffuser with very good light transmission coefficient and light diffusion parameters. Mounting should take place before the ceiling surface is finished. After the finishing work of the ceiling is ended, the diffuser is installed.

## Product information

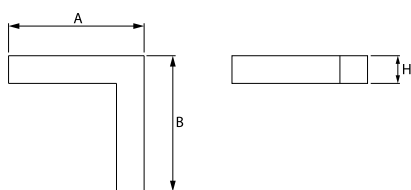
Category	Architectural luminaires
Family	PATOS LINE LED CONNECTOR L
Name	PATOS-LINE LED 4400 PLX EDD 830 LINE-1S / CONNECTOR TYPE-LB 600/600
Index	19.0032.0217.34



## Light and electrical data

Light source	LED
Luminous flux LED [lm]	4406
LED power [W]	23,4
Luminaire luminous flux [lm]	2937
Power of luminaire [W]	24,7
Luminaire's light efficiency [lm/W]	118,9
Color of the light [K]	3000
CRI	>80
SDCM (LED sources)	3
Beam angle [°]	(C0-C180) / (C90-C270) - 109° / 107,2°
Protection against electric shock	I
Protection degree	IP20
Voltage	220..240 V, 50..60 Hz
Lifetime of LED sources [h]	100000 (1) / 147000 (2)
Lx/By	L80/B10 (1) / L70/B50 (2)
Operating temperature range [°C]	5 ÷ 30
Driver	DIM DALI (EDD)
Power factor cos φ	>0,95
Circuit load capacity	17 (B10), 28 (B16), 26 (C10), 41 (C16)

## Mechanical data



Assembly	mounted in plasterboard ceilings
Material	steel sheet
Color	white
Diffuser	PLX (PMMA opal)
Impact resistant	IK04
Dimensions [mm]	602 x 602 x 83
Mounting hole [mm]	604 x 604 x 80

## A graph of light

