

**Product:** AGALINE LED 3R 10800 OPTICS-1 E 34 IP65 840 / L-940MM

**Index:** 0E4ALL3R108BS1



## Description

Agaline 3R is a single linear luminaire designed for mounting on slings. The body is made of white powder-coated steel sheet. Optical system based on lenses providing different light distribution. High level of protection against penetration of dust and water - IP65. Agaline is an excellent solution for lighting industrial facilities and warehouses, but also finds application in offices, supermarkets and shops.

## Product information

Category	<b>Industrial luminaires</b>
Family	<b>AGALINE LED 3R</b>
Name	<b>AGALINE LED 3R 10800 OPTICS-1 E 34 IP65 840 / L-940MM</b>
Index	<b>0E4ALL3R108BS1</b>

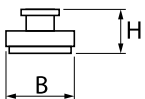
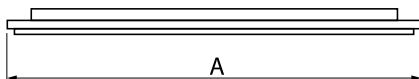


## Light and electrical data

Light source	<b>LED</b>
Luminous flux LED [lm]	<b>10620</b>
LED power [W]	<b>70</b>
Luminaire luminous flux [lm]	<b>10601</b>
Power of luminaire [W]	<b>78</b>
Luminaire's light efficiency [lm/W]	<b>135,9</b>
Color of the light [K]	<b>4000</b>
CRI	<b>&gt;80</b>
SDCM (LED sources)	<b>3</b>
Beam angle [°]	<b>(C0-C180) / (C90-C270) - 68,2° / 69,4°</b>
Protection against electric shock	<b>I</b>
Protection degree	<b>IP65</b>
Voltage	<b>220..240 V, 50..60 Hz</b>
Lifetime of LED sources [h]	<b>&gt;54000</b>
Lx/By	<b>L80B10</b>
Operating temperature range [°C]	<b>5 ÷ 30</b>
Driver	<b>standard on/off (E)</b>
Power factor cos φ	<b>&gt;0,95</b>
Circuit load capacity	<b>14 (B10), 22 (B16), 14 (C10), 22 (C16)</b>

## Mechanical data

Assembly	<b>surface mounted on slings</b>
Material	<b>steel sheet</b>
Color	<b>RAL 9016 (white)</b>
Diffuser	<b>OPTICS (optical system based on lenses)</b>
Impact resistant	<b>IK04</b>
Dimensions [mm]	<b>940 x 95 x 68</b>



## A graph of light

