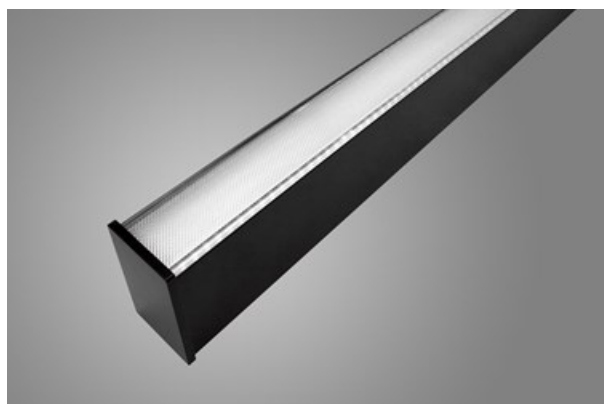
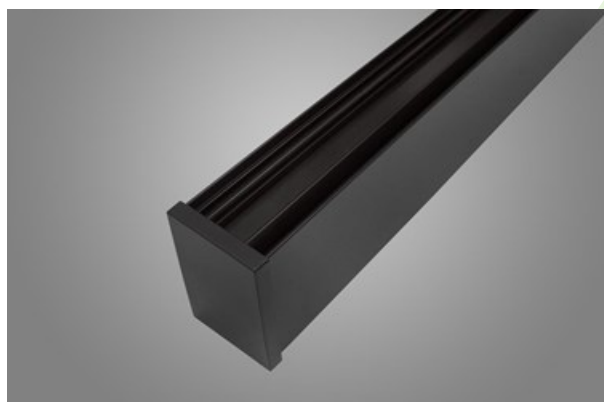




## X-LINE SLIM LED

Surface mounted luminaires



The luminaire is made of aluminum profile. There is only lower half-space light distribution (L-DOWN). Comparing to the traditional X-Line LED, size of the luminaire has been reduced, and all construction has been closed in a narrow 48 mm profile, which gives now a more elegant form of the product. The X-Line Slim uses a PLX or Micro-PRM opal diffuser or lenses. All of this allows to manipulate light and create lighting systems, facilitating the creation of comfortable vision in the interiors and their aesthetic appearance. The X-Line Slim luminaire is designed for mounting on suspensions.



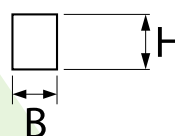
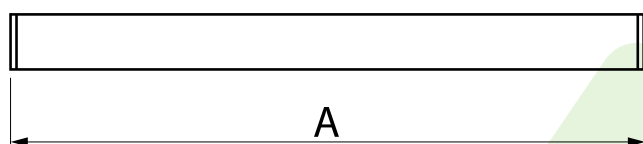
Port Praski - Okrzei 6-8 street, Warsaw



## Main parameters:

Name	Luminous flux LED [lm]	Power of luminaire [W]	Color [K]	Dimensions A x B x H [mm]
X-LINE SLIM L-DOWN LED 2600	2617 / 2525	14,4	4000 / 3000	1138 x 48 x 70 / 1144 x 48 x 70
X-LINE SLIM L-DOWN LED 3250	3158 / 3273	18,3	3000 / 4000	1425 x 48 x 70
X-LINE SLIM L-DOWN LED 3900	3926	21,7	4000	1698 x 48 x 70
X-LINE SLIM L-DOWN LED 4400	4565 / 4406 / 4304÷4574 (2700÷6500 K)	24,7 / 32	4000 / 3000 / 2700 ÷ 6500	1138 x 48 x 70 / 1144 x 48 x 70 / 1425 x 48 x 70
X-LINE SLIM L-DOWN LED 4400 TUNABLE WHITE	4304÷4574 (2700÷6500 K)	32	2700 ÷ 6500	1144 x 48 x 70
X-LINE SLIM L-DOWN LED 5200	5234	28,2	4000	2258 x 48 x 70
X-LINE SLIM L-DOWN LED 5500	5526 / 5727 / 5380÷5717 (2700÷6500 K)	30,5 / 40	3000 / 4000 / 2700 ÷ 6500	1425 x 48 x 70
X-LINE SLIM L-DOWN LED 5500 TUNABLE WHITE	5380÷5717 (2700÷6500 K)	40	2700 ÷ 6500	1425 x 48 x 70
X-LINE SLIM L-DOWN LED 6600	6848	35,3	4000	1698 x 48 x 70
X-LINE SLIM L-DOWN LED 8800	9130	49,1	4000	2258 x 48 x 70

## Technical drawing:



## Light and electrical features:

Light source	LED
Voltage	220..240 V, 50..60 Hz
Lifetime of LED sources [h]	100000 (1) / 147000 (2)/50000
Lx/By	L80/B10 (1) / L70/B10 (2)/L80/B10
CRI	>80
SDCM (LED sources)	3
Operating temperature range [°C]	5 ÷ 30
Driver	standard on/off (E) DIM DALI (EDD) *
Power factor cos φ	>0,95

\* Variant to specify when ordering

## Mechanical features:

Assembly	surface mounted on slings
Material	aluminum
Color	anodised aluminum
Diffuser	Micro-PRM (micro-prismatic diffuser PMMA) OPTICS (optical system based on lenses) PLX (PMMA opal)

## Additional information:

See next page of this data sheet to check possible modifications. The luminaire can be made in CLO version.

Note: The power shown refers to the whole system (tolerance +/- 10%).  
The given luminous flux refers to LED light sources (tolerance +/- 10% depends on the value of the colour temperature).  
Technical data may be changed. Photos of the luminaires may differ from reality.  
Date of last update: 23-12-2022

## Dodatkowe informacje / Additional information / Zusätzliche Informationen:

### Przykładowe modyfikacje\* / Examples of modifications\* / Beispiele der Modifikationen\*

\* - UWAGA!!!  
Poniższe rozwiązania nie są dostępne w tych samych wersjach rozmiarowych i mocowych co podstawowa wersja produktu.  
Dane mechaniczne oraz elektryczne mogą się różnić. Możliwość zamówienia tylko po indywidualnych uzgodnieniach.

\* - WARNING!  
The following solutions are not available in the same size and power versions as the basic version of the product.  
Mechanical and electrical data may be different. Possibility to order only after individual contact.

\* - ACHTUNG!!!  
Die nachfolgenden Lösungen sind nicht in der gleichen Größe und mit der gleichen Leistung wie die Basisversion des Produkts erhältlich. Mechanische und elektrische Parameter können davon abweichen. Nur nach individueller Abstimmung lieferbar.

### **X-Line Slim LED**

**(z czujnikiem natężenia światła i obecności / with light and presence sensor / mit einem Lichtstärke- und Anwesenheitssensor)**



### **X-Line Slim LED black PLX**

**(z czarną przesłoną / with black diffuser / mit schwarzer Blende)**



### **X-Line Slim LED**

**(z rastrem Low UGR / with Low UGR louver / mit einem Raster Low UGR)**

