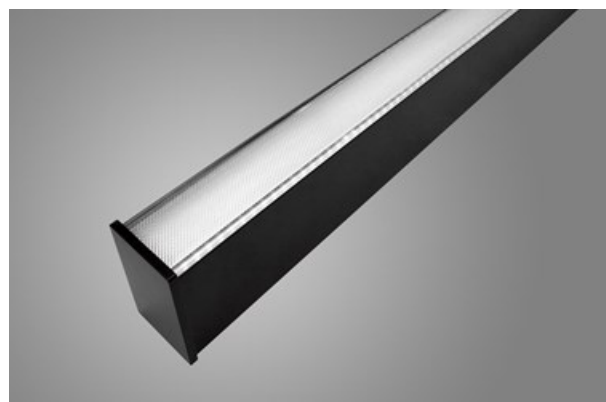
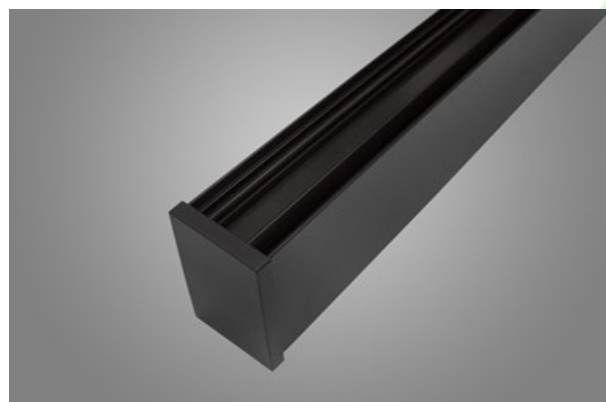




## X-LINE SLIM LED LINE

### Surface mounted luminaires



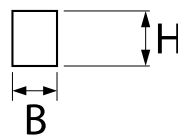
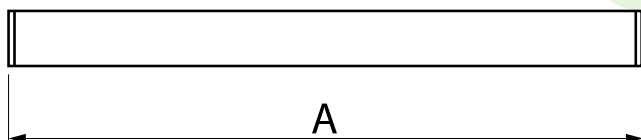
Luminaire for building long light lines made of aluminum profile. There is only lower half-space light distribution (L-DOWN). Comparing to the traditional X-Line LED, size of the luminaire has been reduced, and all construction has been closed in a narrow 48 mm profile, which gives now a more elegant form of the product. The X-Line Slim uses a PLX or Micro-PRM opal diffuser. All of this allows to manipulate light and create lighting systems, facilitating the creation of comfortable vision in the interiors and their aesthetic appearance. The X-Line Slim luminaire is designed for mounting on suspension. Power supply connection only via EL-marked luminaire.



## Main parameters:

Name	Luminous flux LED [lm]	Power of luminaire [W]	Color [K]	Dimensions A x B x H [mm]
X-LINE SLIM L-DOWN LED 2200 LINE	2283	12,6	4000	574 x 48 x 70
X-LINE SLIM L-DOWN LED 4400 LINE	4565	24,7	4000	1132 x 48 x 70 / 1124 x 48 x 70
X-LINE SLIM L-DOWN LED 6600 LINE	6848	35,3	4000	1702 x 48 x 70 / 1700 x 48 x 70 / 1692 x 48 x 70 / 1684 x 48 x 70
X-LINE SLIM L-DOWN LED 8800 LINE	9130	49,1	4000	2252 x 48 x 70 / 2244 x 48 x 70
X-LINE SLIM L-DOWN LED 13200 LINE	13695	71,6	4000	3395 x 48 x 70

## Technical drawing:



## Light and electrical features:

Light source	LED
Voltage	220..240 V, 50..60 Hz
Lifetime of LED sources [h]	100000 (1) / 147000 (2)
Lx/By	L80/B10 (1) / L70/B10 (2)
CRI	>80
SDCM (LED sources)	3
Operating temperature range [°C]	5 ÷ 30
Driver	standard on/off (E) DIM DALI (EDD) *
Power factor cos φ	>0,95

\* Variant to specify when ordering

## Mechanical features:

Assembly	surface mounted on slings
Material	aluminum
Color	anodised aluminum
Diffuser	Micro-PRM (micro-prismatic diffuser PMMA) PLX (PMMA opal)

## Additional information:

Geometric lines of rectangular type must be consulted with luminaire's constructor. The luminaire can be made in CLO version.

Note: The power shown refers to the whole system (tolerance +/- 10%).  
The given luminous flux refers to LED light sources (tolerance +/- 10% depends on the value of the colour temperature).  
Technical data may be changed. Photos of the luminaires may differ from reality.  
Date of last update: 23-12-2022