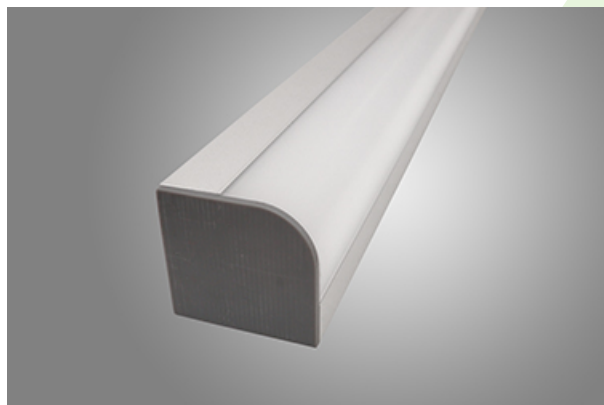
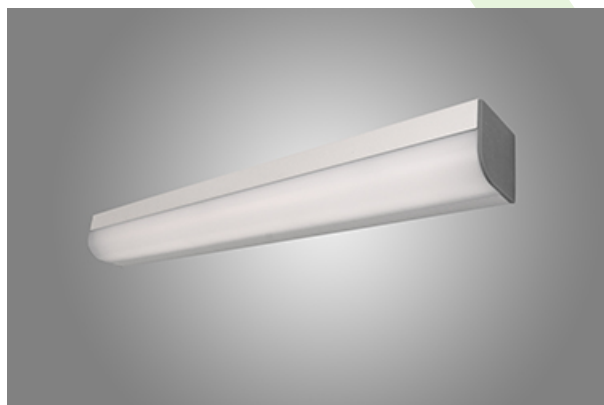




X-WALL R LED TUNABLE WHITE

Tunable White luminaires



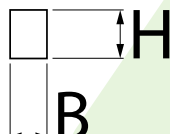
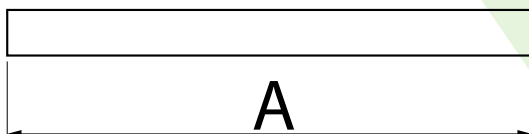
Luminaires designed for surface mounting. Made of aluminium with an opal polycarbonate diffuser, they include highly efficient LEDs. Easy-to-install, specifically recommended for damp areas.



Main parameters:

Name	Luminous flux LED [lm]	Power of luminaire [W]	Color [K]	Dimensions A x B x H [mm]
X-WALL R LED 2200 TUNABLE WHITE	2157÷2275 (2700÷6500 K)	16	2700 ÷ 6500	580 x 56 x 60
X-WALL R LED 3300 TUNABLE WHITE	3228÷3430 (2700÷6500 K)	19,2	2700 ÷ 6500	862 x 56 x 60
X-WALL R LED 4400 TUNABLE WHITE	4304÷4574 (2700÷6500 K)	32	2700 ÷ 6500	1140 x 56 x 60
X-WALL R LED 5500 TUNABLE WHITE	5380÷5717 (2700÷6500 K)	30,5	2700 ÷ 6500	1424 x 56 x 60

Technical drawing:



Light and electrical features:

Light source	LED
Voltage	220..240 V, 50..60 Hz
Lifetime of LED sources [h]	50000
Lx/By	L80/B10
CRI	>80
SDCM (LED sources)	3
Operating temperature range [°C]	5 ÷ 30
Driver	DIM DALI (EDD)
Power factor cos φ	>0,95

Mechanical features:

Assembly	mounted on wall
Material	aluminum
Color	anodised aluminum
Diffuser	PC (opalescent polycarbonate)

Additional information:

The luminaire can be made in CLO version.

Note: The power shown refers to the whole system (tolerance +/- 10%).
The given luminous flux refers to LED light sources (tolerance +/- 10% depends on the value of the colour temperature).
Technical data may be changed. Photos of the luminaires may differ from reality.
Date of last update: 23-12-2022