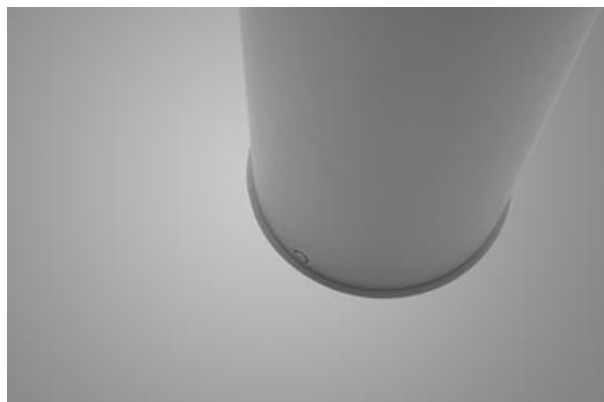




TOSCA LED

Outdoor luminaires



Outdoor luminaire to be mounted on hard surface (concrete, sett blocks or foundations) equipped in the latest generation, highly efficient and energy saving LED sources. Aluminium made housing is corrosion resistant. Product is designated to efficient illumination of walking paths, parks, recreational areas, residential areas. Level of protection against penetration of dust, moisture and solids: IP65



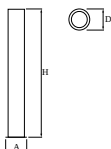
Osiedle na Woli, Warsaw



Main parameters:

| Name | Luminous flux LED [lm] | Power of luminaire [W] | Color [K] | Dimensions D x H [mm] |
|--------------------|------------------------|------------------------|-------------|-----------------------|
| TOSCA LED 300 2000 | 1994 / 2121 | 15 | 3000 / 4000 | Ø210 x 300 |
| TOSCA LED 600 2000 | 1994 / 2121 | 15 | 3000 / 4000 | Ø210 x 600 |
| TOSCA LED 900 2000 | 1994 / 2121 | 15 | 3000 / 4000 | Ø210 x 900 |

Technical drawing:



Light and electrical features:

| | |
|----------------------------------|-----------------------|
| Light source | LED |
| Voltage | 220..240 V, 50..60 Hz |
| Lifetime of LED sources [h] | 60000 |
| Lx/By | L80/B10 |
| CRI | >80 |
| SDCM (LED sources) | 3 |
| Operating temperature range [°C] | -20 ÷ 30 |
| Driver | standard on/off (E) |
| Power factor cos φ | >0,95 |

Mechanical features:

| | |
|----------|--|
| Assembly | for the ground |
| Material | aluminum |
| Color | RAL 9007 (dark gray, metallic, fine structure) |
| Diffuser | transparent polycarbonate |

Note: The power shown refers to the whole system (tolerance +/- 10%).
The given luminous flux refers to LED light sources (tolerance +/- 10% depends on the value of the colour temperature).
Technical data may be changed. Photos of the luminaires may differ from reality.
Date of last update: 23-12-2022