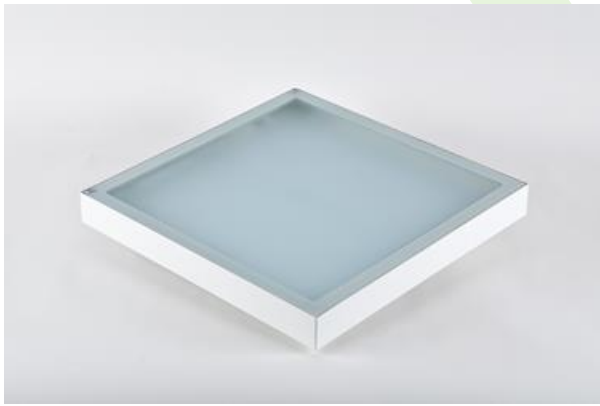
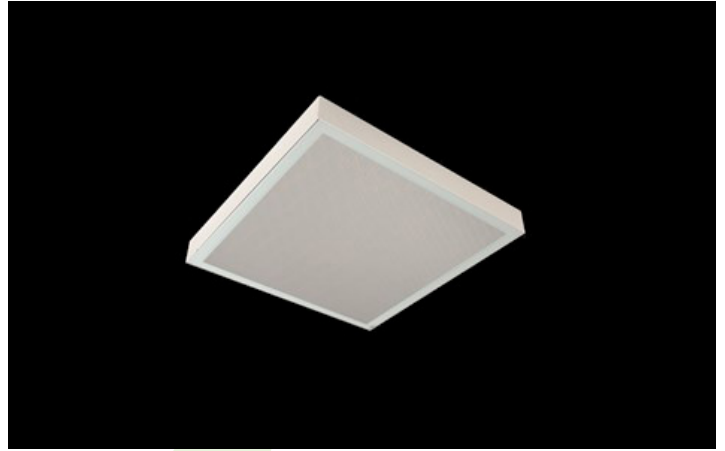




## RUBIN CLEAN NO FRAME LED

Clean luminaires - surface



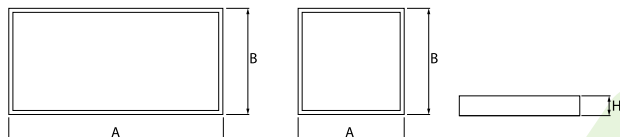
Surface mounted luminaire equipped in highly efficient LED panels. Luminaire body made from steel sheet, powder coated in white. Its characteristic feature is lack of aluminum frame what allows to exclude the unwished-for contamination in clean rooms. There are no visible elements joining the diffuser and the luminaire body. Luminaire recommended for: operating and treatment rooms, as well as intensive care units.



## Main parameters:

Name	Luminous flux LED [lm]	Power of luminaire [W]	Color [K]	Dimensions A x B x H [mm]
RUBIN CLEAN NO FRAME LED 2600	2525 / 2617	14,4	3000 / 4000	574 x 274 x 69
RUBIN CLEAN NO FRAME LED 3900	3788 / 3926	21,7	3000 / 4000	574 x 574 x 69
RUBIN CLEAN NO FRAME LED 4400	4406 / 4565	24,7	3000 / 4000	574 x 274 x 69
RUBIN CLEAN NO FRAME LED 5200	5051 / 5234	28,2	3000 / 4000	1174 x 274 x 69 / 574 x 574 x 69
RUBIN CLEAN NO FRAME LED 6500	6314 / 6543	34,8	3000 / 4000	574 x 574 x 69
RUBIN CLEAN NO FRAME LED 6600	6608 / 6848	35,3	3000 / 4000	574 x 574 x 69
RUBIN CLEAN NO FRAME LED 7800	7576 / 7851	43,1	3000 / 4000	1174 x 574 x 69
RUBIN CLEAN NO FRAME LED 8800	8811 / 9130	49,1	3000 / 4000	1174 x 274 x 69 / 574 x 574 x 69
RUBIN CLEAN NO FRAME LED 10400	10102 / 10468	56,3	3000 / 4000	1174 x 574 x 69
RUBIN CLEAN NO FRAME LED 11000	11014 / 11413	60,5	3000 / 4000	574 x 574 x 69
RUBIN CLEAN NO FRAME LED 13200	13217 / 13695	71,6	3000 / 4000	1174 x 574 x 69
RUBIN CLEAN NO FRAME LED 17600	17622 / 18261	100,5	3000 / 4000	1174 x 574 x 69

## Technical drawing:



## Light and electrical features:

Light source	LED
Voltage	220..240 V, 50..60 Hz
Lifetime of LED sources [h]	100000 (1) / 147000 (2)
Lx/By	L80/B10 (1) / L70/B50 (2)
CRI	>80
SDCM (LED sources)	3
Operating temperature range [°C]	5 ÷ 30
Driver	standard on/off (E)
Power factor cos φ	>0,95

## Mechanical features:

Assembly	surface mounted on ceiling
Material	steel sheet
Color	white
Diffuser	Micro-PRM SH (micro-prismatic diffuser PMMA with hardened glass) SHM (hardened mat glass)

Note: The power shown refers to the whole system (tolerance +/- 10%).  
The given luminous flux refers to LED light sources (tolerance +/- 10% depends on the value of the colour temperature).  
Technical data may be changed. Photos of the luminaires may differ from reality.  
Date of last update: 23-12-2022