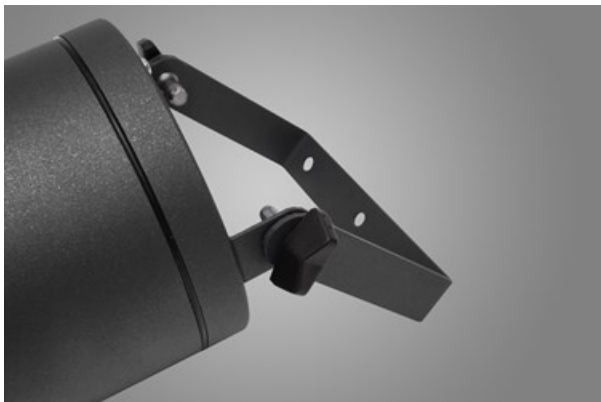
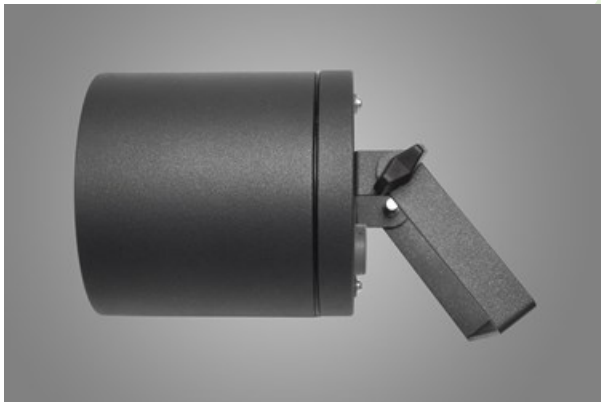
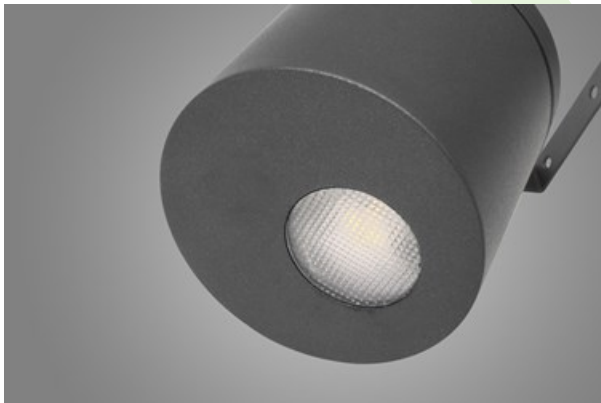
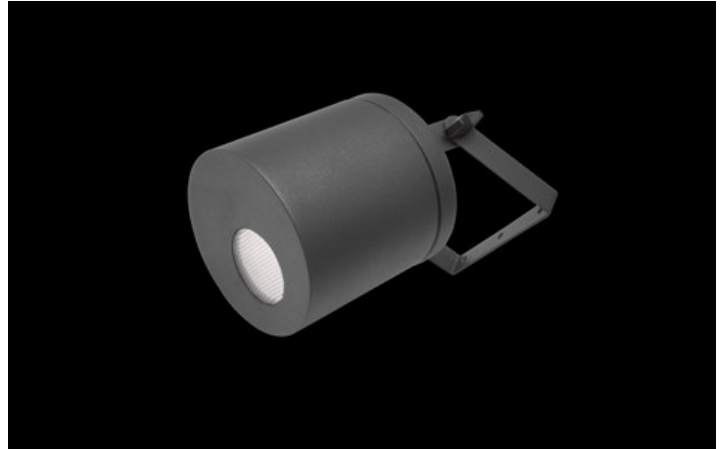




ROLLER LED

Outdoor luminaires



Body of the fitting is made of an aluminum profile and installed on a wall or a ceiling. Assembly on a ceiling is performed using a grip to adjust the fitting in any direction. The fitting is made for locations where it is necessary to provide instantaneous directional lighting, which involves high frequency of switching on the appliance. This type of fitting is particularly recommended for building entrances, garage entries etc.



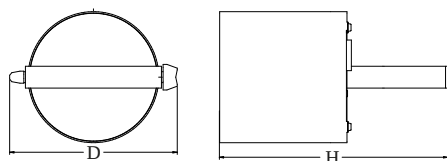
Kadzielnia Nature Reserve, Kielce



Main parameters:

Name	Luminous flux LED [lm]	Power of luminaire [W]	Color [K]	Dimensions D x H [mm]
ROLLER LED 1000	1292 / 1328	9,8	3000 / 4000	Ø145 x 260
ROLLER LED 1800	2000 / 2058	12,8	3000 / 4000	Ø145 x 260

Technical drawing:



Light and electrical features:

Light source	LED
Voltage	220..240 V, 50..60 Hz
Lifetime of LED sources [h]	88000 (1) / 100000 (2) / 100000 (3)/83000 (1) / 100000 (2) / 100000 (3)
Lx/By	L90/B10 (1) / L80/B10 (2) / L70/B10 (3)
CRI	85
SDCM (LED sources)	3/2
Operating temperature range [°C]	-25 ÷ 30
Driver	standard on/off (E)
Power factor cos φ	>0,9

* Variant to specify when ordering

Mechanical features:

Assembly	surface mounted on ceiling or on wall
Material	aluminum
Color	RAL 9005 (black) RAL 9006 (grey) RAL 9007 (dark gray) RAL 7016 (anthracite, metallic, fine structure) RAL 9016 (white) *
Diffuser	opalescent polycarbonate

Additional information:

The luminaire can be equipped with a PIR (Passive Infra Red) motion sensor.

Note: The power shown refers to the whole system (tolerance +/- 10%).
The given luminous flux refers to LED light sources (tolerance +/- 10% depends on the value of the colour temperature).
Technical data may be changed. Photos of the luminaires may differ from reality.
Date of last update: 23-12-2022