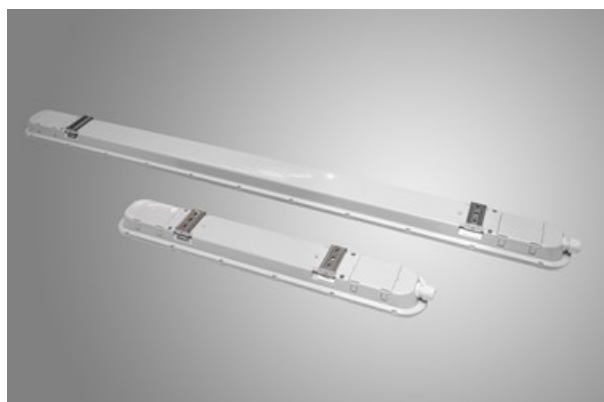




NEPTUN LED V2

Industrial luminaires



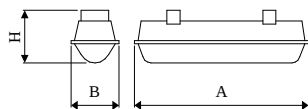
Tightly-closed ceiling luminaires with highly efficient LED light sources, ensuring additional protection against solid body penetration and jet of water from all directions. Perfect to be installed in moist and dusty rooms. The luminaire is characterized by compact size and unbelievably simple and quick way to install comparing with similar products. The color temperature for applied LED light sources is 3000/4000 K. Color rendering index $Ra > 80$. The luminaire is dedicated for halls, warehouses, underground passes, car parks illumination etc.



Main parameters:

Name	Luminous flux LED [lm]	Power of luminaire [W]	Color [K]	Dimensions A x B x H [mm]
NEPTUN LED V2 1300	1204 / 1342	7,3 / 7	3000 / 4000	620 x 72 x 60
NEPTUN LED V2 2200	2109 / 2350	12,3 / 12	3000 / 4000	620 x 72 x 60
NEPTUN LED V2 4400	4219 / 4700 / 4852 / 5100	24,2 / 24 / 28,5 / 29	3000 / 4000	620 x 92 x 60 / 1220 x 92 x 60
NEPTUN LED V2 4400 HT50	5100	28,5	4000	1220 x 92 x 60
NEPTUN LED V2 5200	6066 / 6375	35,1 / 35	3000 / 4000	1220 x 72 x 60
NEPTUN LED V2 5200 HT50	6375	35,1	4000	1220 x 72 x 60
NEPTUN LED V2 5500	6065 / 6376	34,7 / 35	3000 / 4000	1520 x 72 x 60
NEPTUN LED V2 5500 HT50	6376	34,7	4000	1520 x 72 x 60
NEPTUN LED V2 7500	7581 / 7971	42,2 / 42	3000 / 4000	1520 x 92 x 60
NEPTUN LED V2 7500 HT50	7971	42,2	4000	1520 x 92 x 60
NEPTUN LED V2 8800	8492 / 8925	46,9 / 47	3000 / 4000	1220 x 92 x 60
NEPTUN LED V2 8800 HT50	8925	46,9	4000	1220 x 92 x 60
NEPTUN LED V2 10000	9704 / 10200	56,8 / 57	3000 / 4000	1220 x 92 x 60
NEPTUN LED V2 11000	10613 / 11157	57,7 / 58	3000 / 4000	1520 x 92 x 60
NEPTUN LED V2 16000	16016	97,4	4000	1220 x 92 x 60

Technical drawing:



Light and electrical features:

Light source	LED
Voltage	220..240 V, 50..60 Hz
Lifetime of LED sources [h]	100000 (1) / 147000 (2)
Lx/By	L80/B10 (1) / L70/B10 (2)
CRI	>80
SDCM (LED sources)	3
Operating temperature range [°C]	-25 ÷ 40/-40 ÷ 50/-25 ÷ 30
Driver	standard on/off (E) DIM DALI (EDD) *
Power factor cos φ	>0,95

* Variant to specify when ordering

Mechanical features:

Assembly	directly mounted to ceiling construction or surface mounted on slings
Material	polycarbonate
Color	RAL 9006 (grey)
Diffuser	PC-FROZEN (frozen polycarbonate)

Additional information:

Possibility of using looping through power supply 16 A. The luminaire can be made in CLO version.