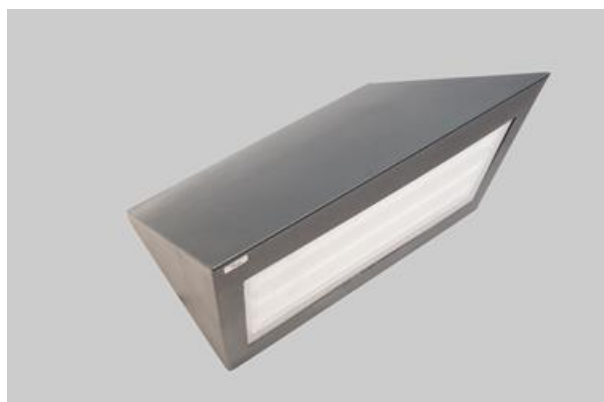




## LUXWALL LED

Outdoor luminaires



An outdoor fitting made for illuminating building facades and creating lighting effects. The body is made of aluminum painted with special facade paint which is resistant to bad weather conditions. Energy-efficient fitting made of component parts produced by renowned companies. The fitting is featured by a high level of protection against the penetration of solids and water: IP65, which renders the fitting an interesting decorative solution highlighting the architecture of an illuminated building.



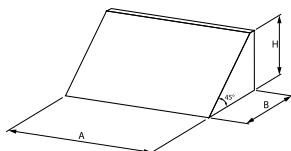
RSM Praga – Osowskiego Street 11, Warsaw



## Main parameters:

Name	Luminous flux LED [lm]	Power of luminaire [W]	Color [K]	Dimensions A x B x H [mm]
LUXWALL LED 3300	3316 / 3436	19,2	3000 / 4000	360 x 240 x 220

## Technical drawing:



## Light and electrical features:

Light source	LED
Voltage	220..240 V, 50..60 Hz
Lifetime of LED sources [h]	60000
Lx/By	L80/B10
CRI	>80
SDCM (LED sources)	3
Operating temperature range [°C]	-25 ÷ 30
Driver	standard on/off (E) DIM DALI (EDD) *
Power factor cos φ	>0,95

\* Variant to specify when ordering

## Mechanical features:

Assembly	mounted on wall
Material	aluminum
Color	RAL 7016 (anthracite, metallic, fine structure) RAL 9016 (white) *
Diffuser	PC-T (transparent polycarbonate)

## Additional information:

The luminaire can be made in CLO version.

Note: The power shown refers to the whole system (tolerance +/- 10%).  
The given luminous flux refers to LED light sources (tolerance +/- 10% depends on the value of the colour temperature).  
Technical data may be changed. Photos of the luminaires may differ from reality.  
Date of last update: 23-12-2022