

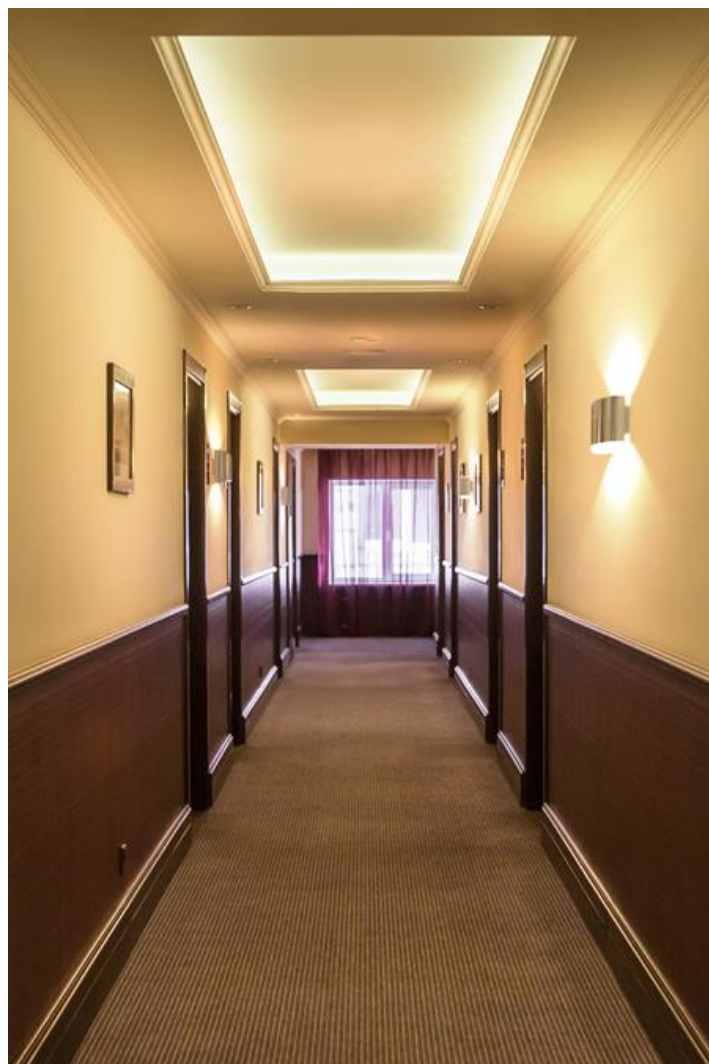


## LUXWALL DECO LED

### Architectural luminaires



Architectural luminaire, wall mounted for decorative or accent lighting of representative interiors, halls or corridors. Eagerly used in such facilities as hotels, palaces, villas or art galleries. The body is made of steel painted white (RAL 9016). Other colors available upon special request. Luminaire reflector made of polished stainless steel (possibility of painting in white). The product is available in two variants due to the light source. It can be equipped with LED sources and an electronic driver or have a G9 base for interchangeable sources of general use that do not require a dedicated driver. In-direct luminaire.

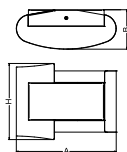




## Main parameters:

Name	Luminous flux LED [lm]	Power of luminaire [W]	Color [K]	Dimensions A x B x H [mm]
LUXWALL DECO LED 1X G9	depending on applied light source	depending on applied light source	depending on applied light source	260 x 103 x 220
LUXWALL DECO LED 4X1,7W	608	10	4000	260 x 103 x 220

## Technical drawing:



## Light and electrical features:

<b>Light source</b>	RETROFIT G9 (not included)/LED
<b>Voltage</b>	220..240 V, 50..60 Hz
<b>Lifetime of LED sources [h]</b>	depending on applied light source/50000
<b>Lx/By</b>	depending on applied light source/L70/B50
<b>CRI</b>	depending on applied light source/>80
<b>SDCM (LED sources)</b>	depending on applied light source/7
<b>Operating temperature range [°C]</b>	5 ÷ 30
<b>Driver</b>	none standard on/off (E) *
<b>Power factor cos φ</b>	>0,5

\* Variant to specify when ordering

## Mechanical features:

<b>Assembly</b>	mounted on wall
<b>Material</b>	steel sheet
<b>Color</b>	RAL 9016 (white) gray *
<b>Diffuser</b>	none

Note: The power shown refers to the whole system (tolerance +/- 10%).  
The given luminous flux refers to LED light sources (tolerance +/- 10% depends on the value of the colour temperature).  
Technical data may be changed. Photos of the luminaires may differ from reality.  
Date of last update: 23-12-2022