

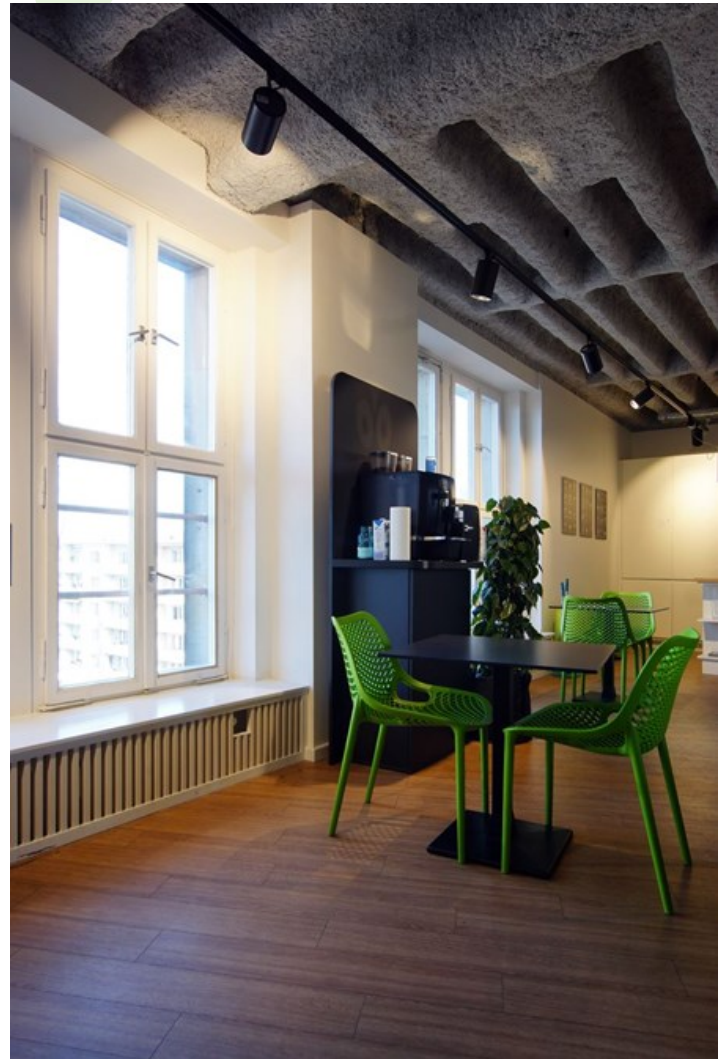


LUXCAN R

Projectors



Monobloc cylindrical spotlight from the family Luxcan R setting an advanced and innovative thermal balance system through passive dissipation with stable colour temperature optimised to be used as general & accent lighting for commercial areas shop-windows and different indoor spaces. Designed for installation on the triphasic track. Body built in extruded aluminium painted with high quality AXALTA coatings finished in popular colours.



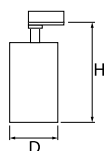
ReBuy office, Berlin



Main parameters:

Name	Luminous flux LED [lm]	Power of luminaire [W]	Color [K]	Dimensions D x H [mm]
LUXCAN R 1800 13°	2058	12,8	4000	Ø108 x 210
LUXCAN R 1800 36°	2058	12,8	4000	Ø108 x 210
LUXCAN R 1800 60°	2058	12,8	4000	Ø108 x 210
LUXCAN R 2500 13°	2709	18,8	4000	Ø108 x 210
LUXCAN R 2500 36°	2709	18,8	4000	Ø108 x 210
LUXCAN R 2500 60°	2709	18,8	4000	Ø108 x 210
LUXCAN R 3700 13°	4111	26,4	4000	Ø108 x 210
LUXCAN R 3700 36°	4111	26,4	4000	Ø108 x 210
LUXCAN R 3700 60°	4111	26,4	4000	Ø108 x 210
LUXCAN R 4800 13°	5276	33,1	4000	Ø108 x 210
LUXCAN R 4800 36°	5276	33,1	4000	Ø108 x 210
LUXCAN R 4800 60°	5276	33,1	4000	Ø108 x 210

Technical drawing:



Light and electrical features:

Light source	LED
Voltage	220..240 V, 50..60 Hz
Lifetime of LED sources [h]	50000/83000 (1) / 100000 (2) / 100000 (3)/77000 (1) / 100000 (2) / 100000 (3)/86000 (1) / 100000 (2) / 100000 (3)
Lx/By	L80/B10/L90/B10 (1) / L80/B10 (2) / L70/B10 (3)
CRI	82
SDCM (LED sources)	3
Operating temperature range [°C]	-20 ÷ 35
Driver	standard on/off (E) DIM DALI (EDD) *
Power factor cos φ	>0,95

* Variant to specify when ordering

Mechanical features:

Assembly	mounted on a three-phase track
Material	aluminum
Color	RAL 9005 (black) RAL 9006 (grey) RAL 9003 (white) *
Diffuser	none

Additional information:

The luminaire can be made in CLO version.

Note: The power shown refers to the whole system (tolerance +/- 10%).
The given luminous flux refers to LED light sources (tolerance +/- 10% depends on the value of the colour temperature).
Technical data may be changed. Photos of the luminaires may differ from reality.
Date of last update: 23-12-2022