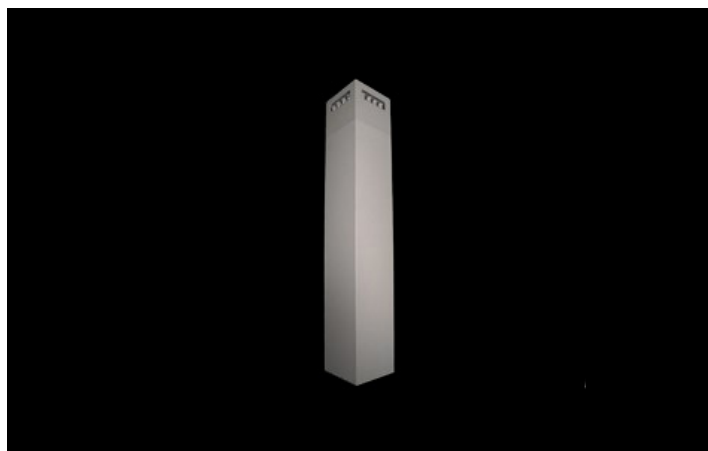




## KUBIK POLE LED

Outdoor luminaires



Outdoor luminaire for assembling on a hardened surface (concrete, sett, or basement) equipped with the highly effective power saving LED sources of the newest generation. It is dedicated to illuminate pedestrian routes such as park alleys, parking spaces communication routes, estate entrances. Luminaire body coated with facade paint dedicated for outdoor usage, light sources placed in upper part of the luminaire with the asymmetric lens providing illumination of the area. IP65 hermetic luminaire, IK09 strike resistant. Luminaire available in variety of colors from RAL color palette upon the clients request. Luminaire height: 300, 600, 900, 3000 and 4000 mm.



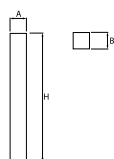
Private property, Starachowice



## Main parameters:

Name	Luminous flux LED [lm]	Power of luminaire [W]	Color [K]	Dimensions A x B x H [mm]
KUBIK POLE 300/600/900/3000/4000 0/2/0/0 LED	248 / 344	5	3000 / 6500	150 x 150 x 300 / 150 x 150 x 600 / 150 x 150 x 900 / 150 x 150 x 3000 / 150 x 150 x 4000
KUBIK POLE 300/600/900/3000/4000 0/3/0/0 LED	372 / 516	7	3000 / 6500	150 x 150 x 300 / 150 x 150 x 600 / 150 x 150 x 900 / 150 x 150 x 3000 / 150 x 150 x 4000
KUBIK POLE 300/600/900/3000/4000 0/4/0/0 LED	496 / 688	10	3000 / 6500	150 x 150 x 300 / 150 x 150 x 600 / 150 x 150 x 900 / 150 x 150 x 3000 / 150 x 150 x 4000
KUBIK POLE 300/600/900/3000/4000 1/2/1/0 LED	496 / 688	10	3000 / 6500	150 x 150 x 300 / 150 x 150 x 600 / 150 x 150 x 900 / 150 x 150 x 3000 / 150 x 150 x 4000
KUBIK POLE 300/600/900/3000/4000 1/3/1/0 LED	620 / 860	12	3000 / 6500	150 x 150 x 300 / 150 x 150 x 600 / 150 x 150 x 900 / 150 x 150 x 3000 / 150 x 150 x 4000
KUBIK POLE 300/600/900/3000/4000 1/4/1/0 LED	744 / 1032	13	3000 / 6500	150 x 150 x 300 / 150 x 150 x 600 / 150 x 150 x 900 / 150 x 150 x 3000 / 150 x 150 x 4000
KUBIK POLE 300/600/900/3000/4000 2/0/2/0 LED	496 / 688	10	3000 / 6500	150 x 150 x 300 / 150 x 150 x 600 / 150 x 150 x 900 / 150 x 150 x 3000 / 150 x 150 x 4000
KUBIK POLE 300/600/900/3000/4000 2/2/2/0 LED	744 / 1032	13	3000 / 6500	150 x 150 x 300 / 150 x 150 x 600 / 150 x 150 x 900 / 150 x 150 x 3000 / 150 x 150 x 4000
KUBIK POLE 300/600/900/3000/4000 2/2/2/2 LED	992 / 1376	15	3000 / 6500	150 x 150 x 300 / 150 x 150 x 600 / 150 x 150 x 900 / 150 x 150 x 3000 / 150 x 150 x 4000
KUBIK POLE 300/600/900/3000/4000 3/0/3/0 LED	744 / 1032	13	3000 / 6500	150 x 150 x 300 / 150 x 150 x 600 / 150 x 150 x 900 / 150 x 150 x 3000 / 150 x 150 x 4000
KUBIK POLE 300/600/900/3000/4000 3/3/3/0 LED	1116 / 1548	19	3000 / 6500	150 x 150 x 300 / 150 x 150 x 600 / 150 x 150 x 900 / 150 x 150 x 3000 / 150 x 150 x 4000
KUBIK POLE 300/600/900/3000/4000 3/3/3/3 LED	1488 / 2064	23	3000 / 6500	150 x 150 x 300 / 150 x 150 x 600 / 150 x 150 x 900 / 150 x 150 x 3000 / 150 x 150 x 4000
KUBIK POLE 300/600/900/3000/4000 4/0/4/0 LED	992 / 1376	15	3000 / 6500	150 x 150 x 300 / 150 x 150 x 600 / 150 x 150 x 900 / 150 x 150 x 3000 / 150 x 150 x 4000
KUBIK POLE 300/600/900/3000/4000 4/4/4/0 LED	1488 / 2064	23	3000 / 6500	150 x 150 x 300 / 150 x 150 x 600 / 150 x 150 x 900 / 150 x 150 x 3000 / 150 x 150 x 4000
KUBIK POLE 300/600/900/3000/4000 4/4/4/4 LED	1984 / 2752	33	3000 / 6500	150 x 150 x 300 / 150 x 150 x 600 / 150 x 150 x 900 / 150 x 150 x 3000 / 150 x 150 x 4000

## Technical drawing:



### Light and electrical features:

<b>Light source</b>	LED
<b>Voltage</b>	220..240 V, 50..60 Hz
<b>Lifetime of LED sources [h]</b>	50000
<b>Lx/By</b>	L70/B50
<b>CRI</b>	>80
<b>SDCM (LED sources)</b>	5
<b>Operating temperature range [°C]</b>	-25 ÷ 30
<b>Driver</b>	standard on/off (E)
<b>Power factor cos φ</b>	>0,5

### Mechanical features:

<b>Assembly</b>	for the ground
<b>Material</b>	aluminum
<b>Color</b>	RAL 9007 (dark gray, metallic, fine structure)
<b>Diffuser</b>	transparent polycarbonate

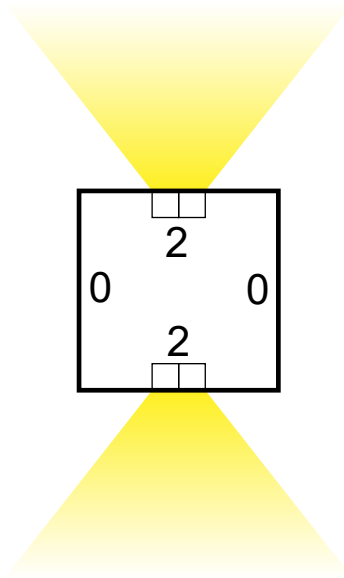


Note: The power shown refers to the whole system (tolerance +/- 10%).  
The given luminous flux refers to LED light sources (tolerance +/- 10% depends on the value of the colour temperature).  
Technical data may be changed. Photos of the luminaires may differ from reality.  
Date of last update: 23-12-2022

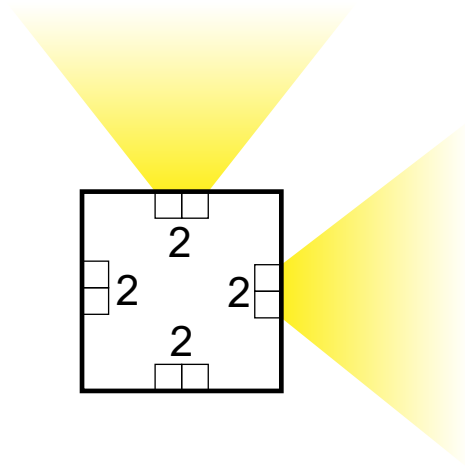
**Dodatkowe informacje / Additional information / Zusätzliche Informationen:**

Objaśnienia dotyczące znakowania dystrybucji światła i ilości soczewek w nazwie produktu.  
 Clarifications on the labeling of the light distribution and the number of LED lenses in the product name.  
 Erläuterungen zur Kennzeichnung der Lichtverteilung und zur Anzahl der LED-Linsen im Produktnamen.

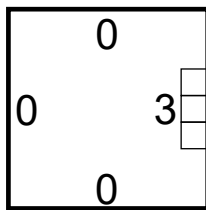
Kubik Pole LED 2/0/2/0



Kubik Pole LED 2/2/2/2



Kubik Pole LED 0/3/0/0



Kubik Pole LED 1/4/1/0

